

**Mac OS**

**Driver  
Install  
Manual**

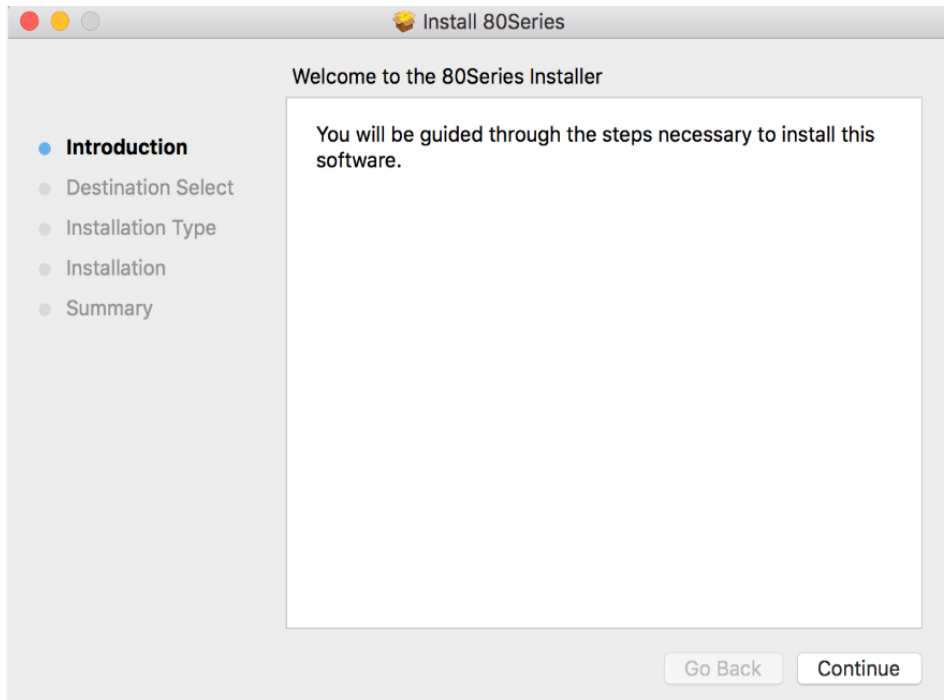
---

## I. Mac OS Driver Installation

Under Mac OS, double click the installation icon

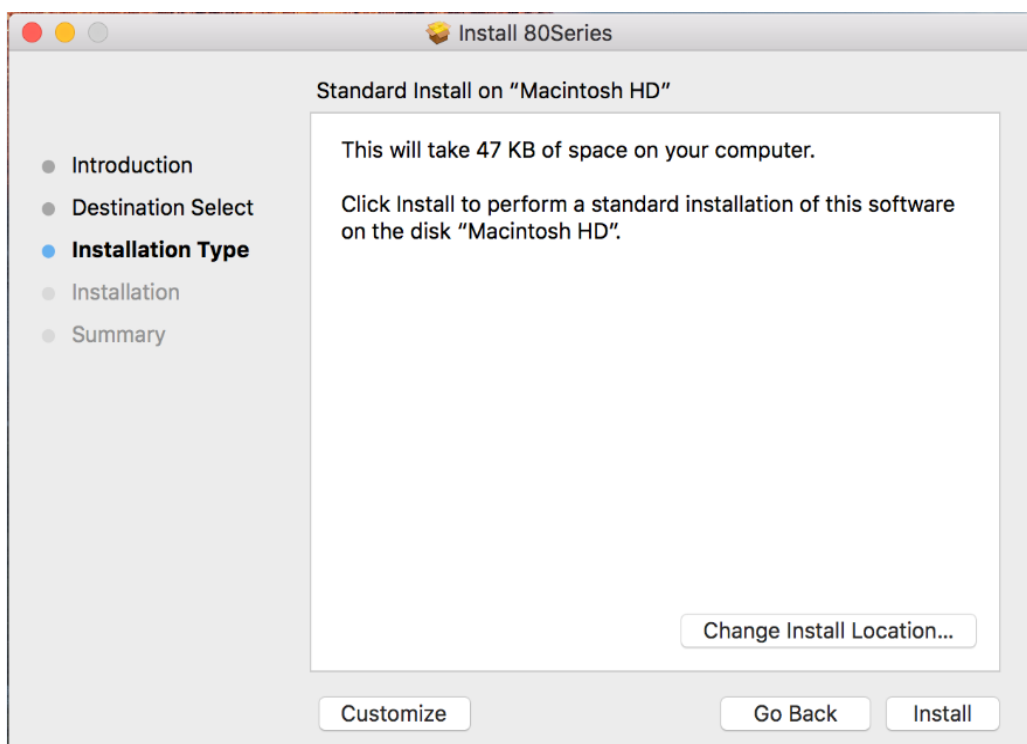


Then, it will show as below picture:



Then click "Continue".

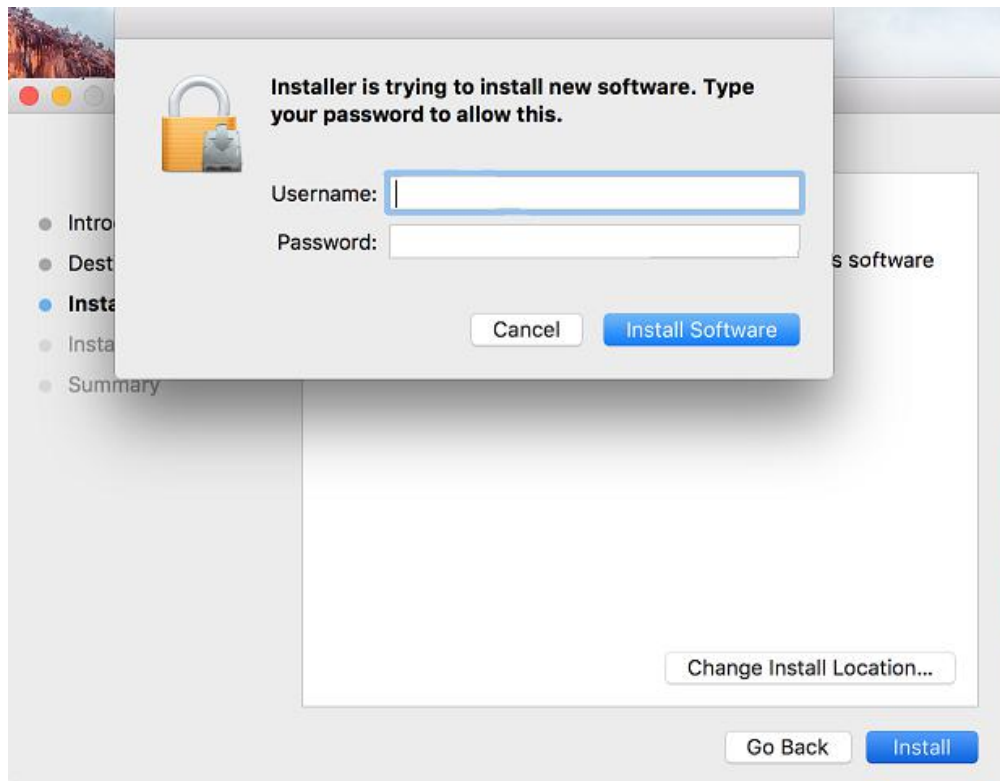
Then, it will show as below picture:



---

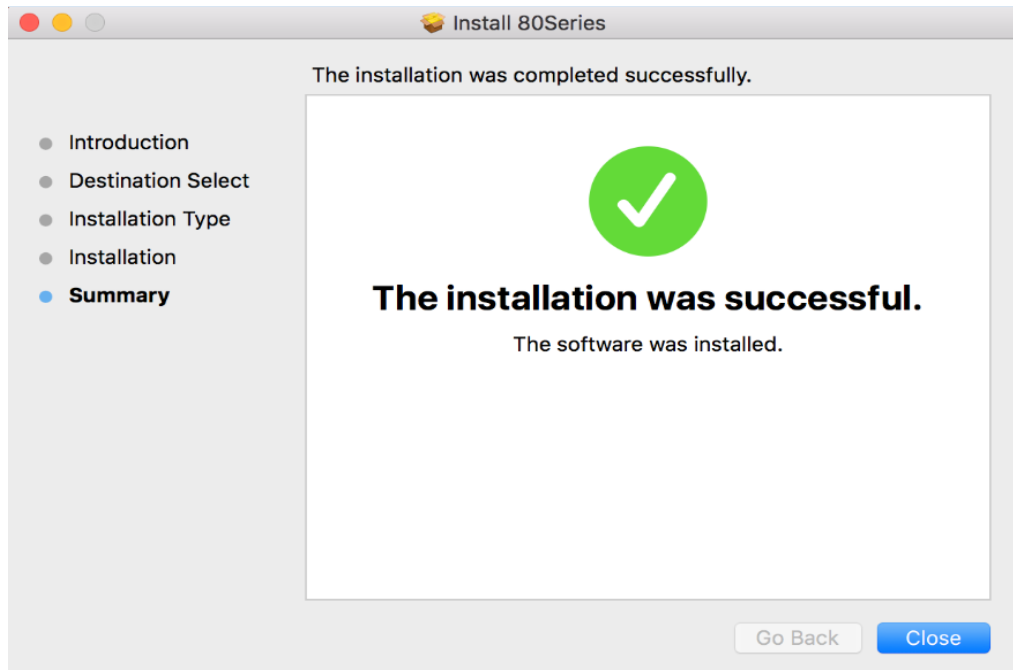
If you click “Install”, the driver will be installed by default path, and if you want to change install location, please click “Change Install Location...” to select the location.

Click “Install”, and then it will show as below:



It will make the pop-up dialog as the picture. It asks the users for a username and password. Please enter the correct the Username and the Password, and then click “Install Software”.

Then it will show as below:



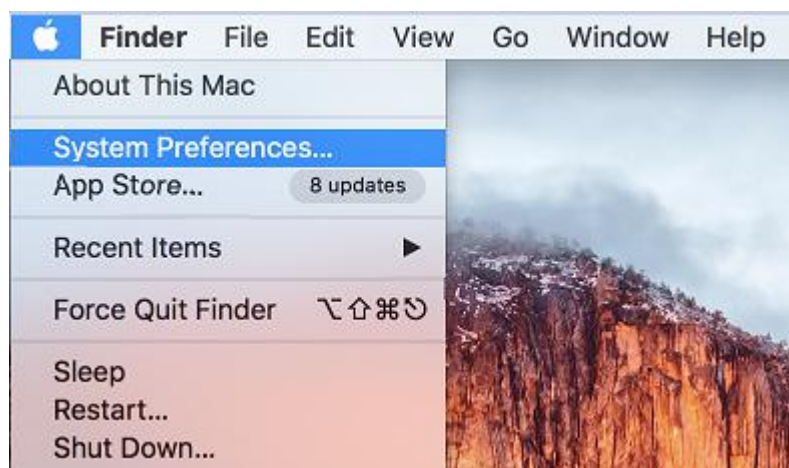
It shows the driver is installed successfully.

## II. Add the Printer

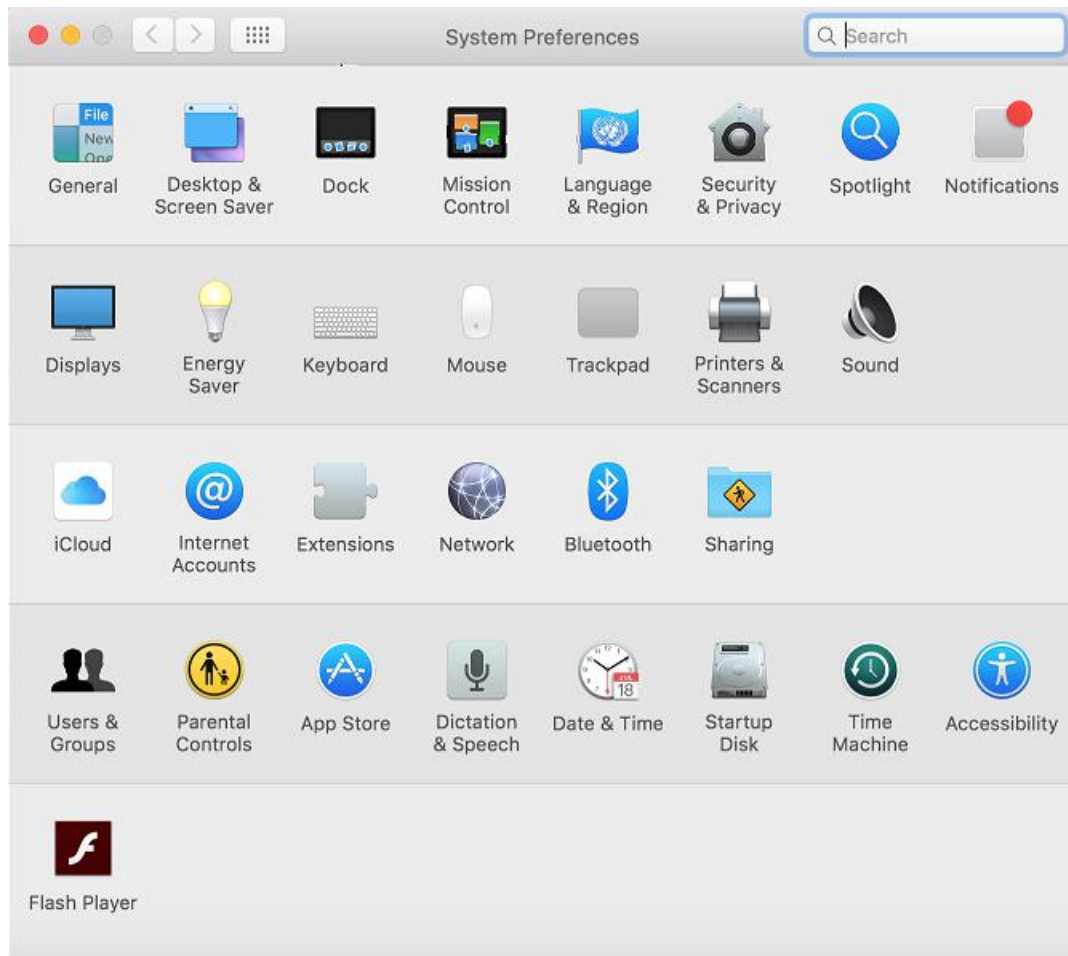
At this moment, only the driver is installed. In addition, it needs to add the printer on Mac OS.

### 2.1 Add the USB Printer

Firstly, select "System Preferences" and open it.

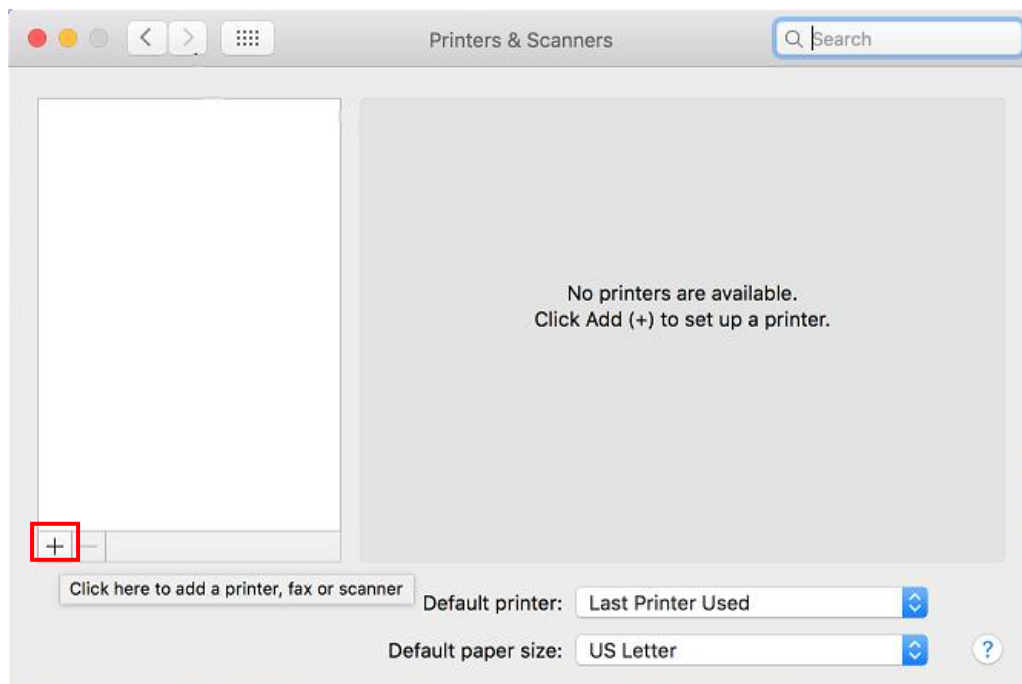


It will show as below:



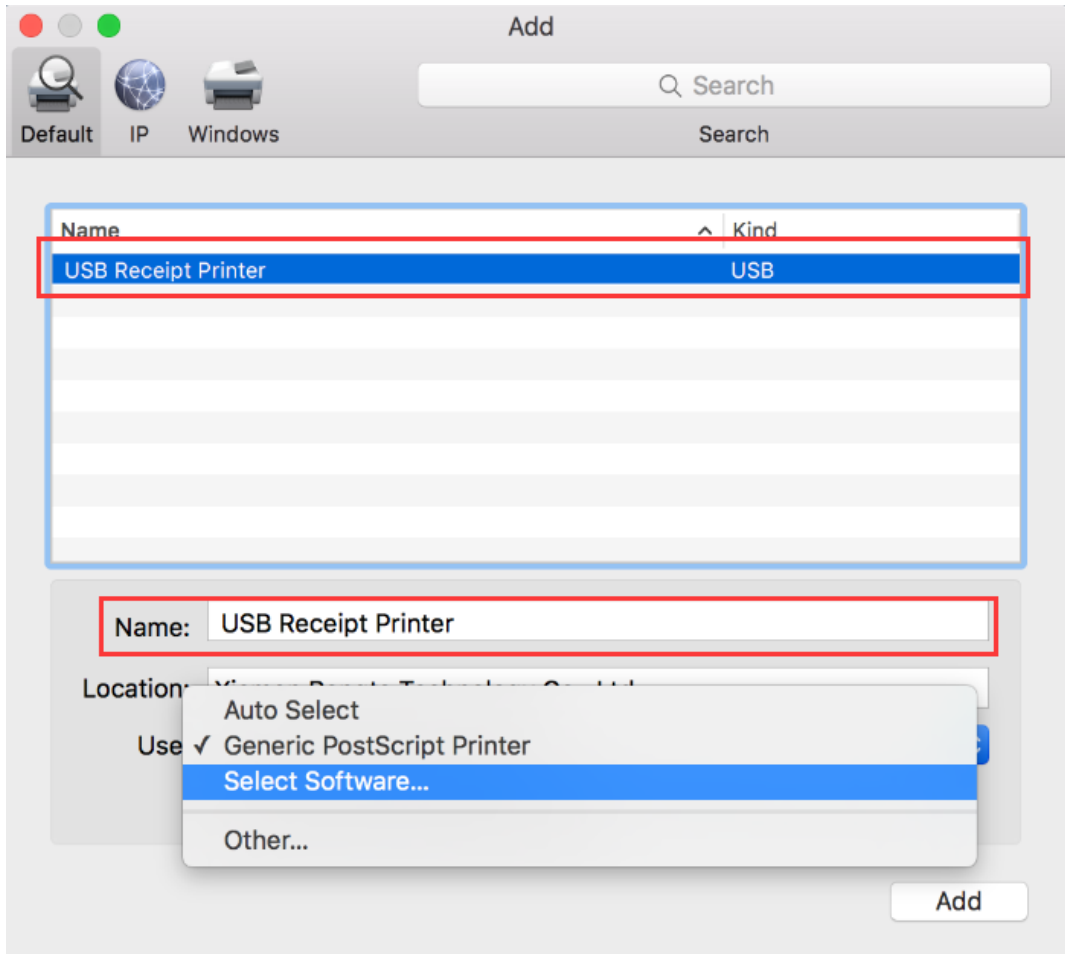
Please select “Printers & Scanners” and open it.

Then, it will show as below:

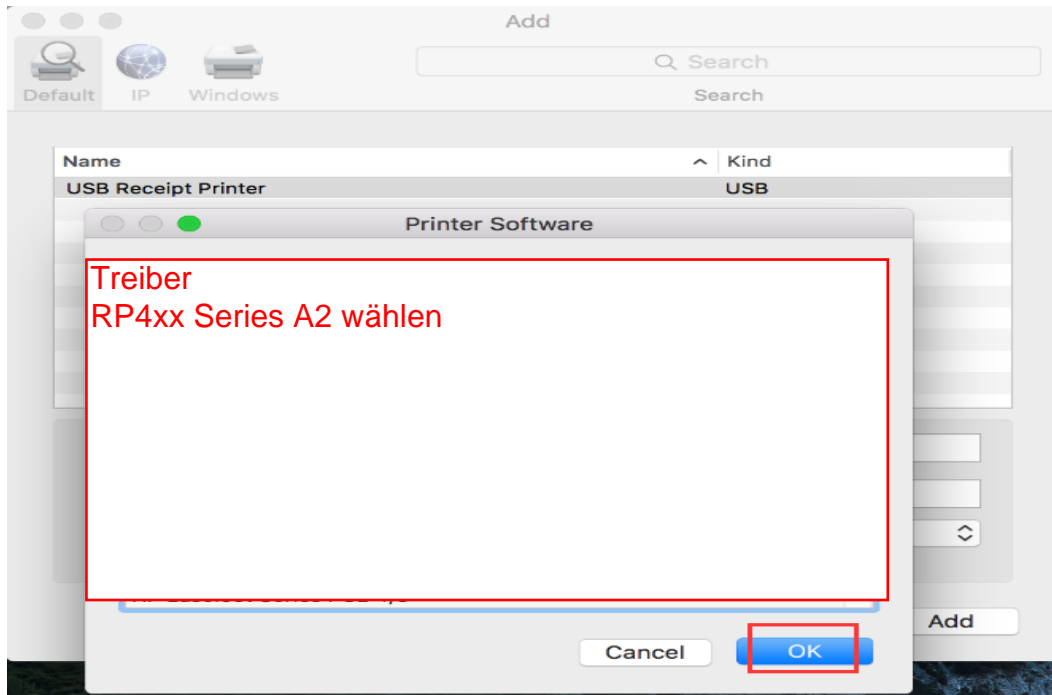


---

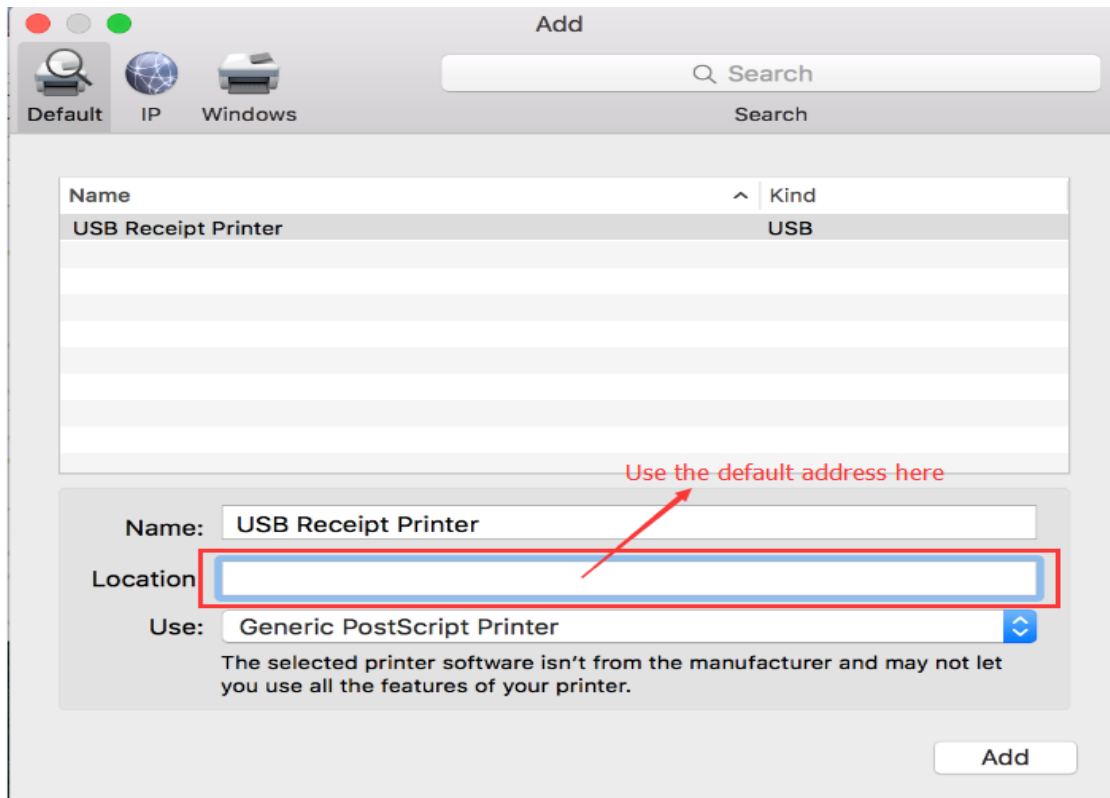
Please click “+”, it will show as below:



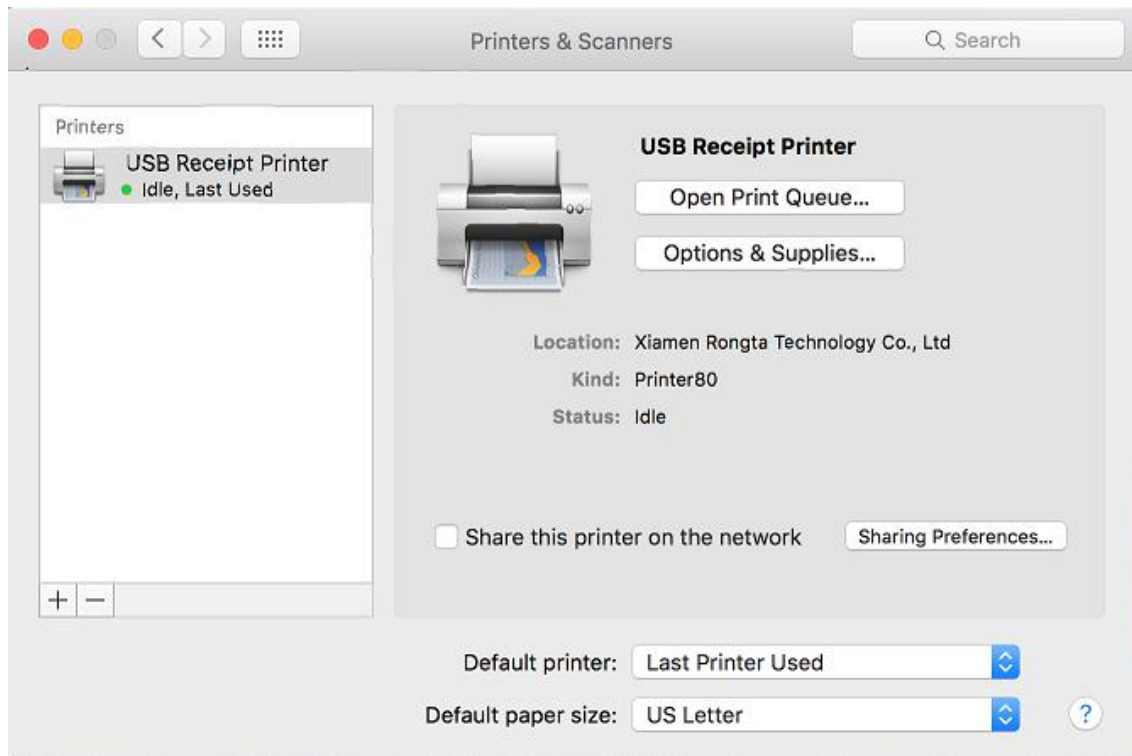
Please select “USB Receipt Printer” and you can change the name. Then please change the “Use” to select “Select Software...” and open it.



Please select "Printer80" and click "OK". It will change as below:

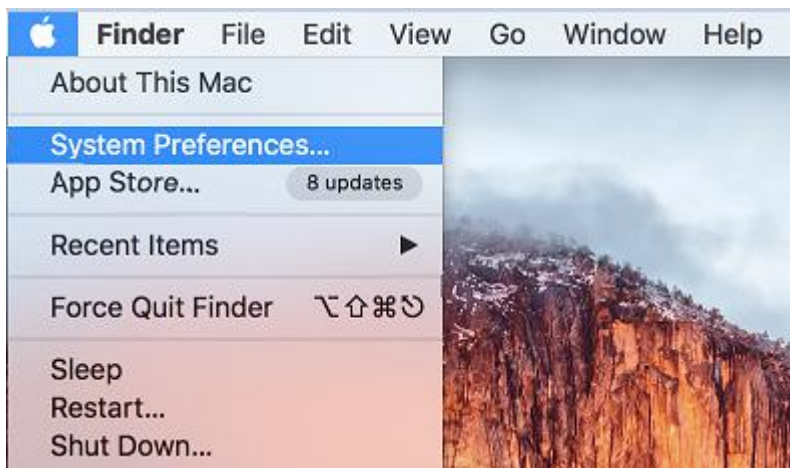


Click “Add”, and the USB Printer will be added.



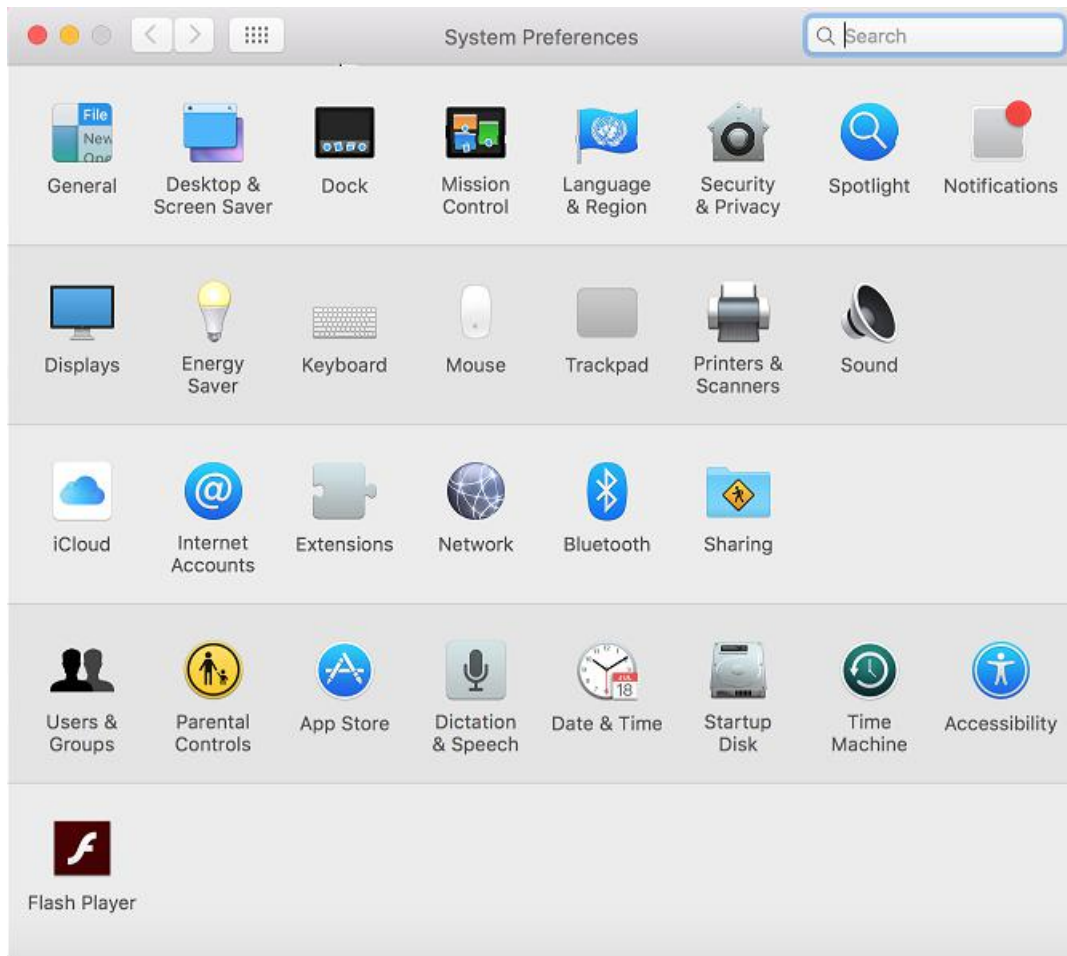
## 2.2 Add the Ethernet Printer

Firstly, select “System Preferences” and open it.



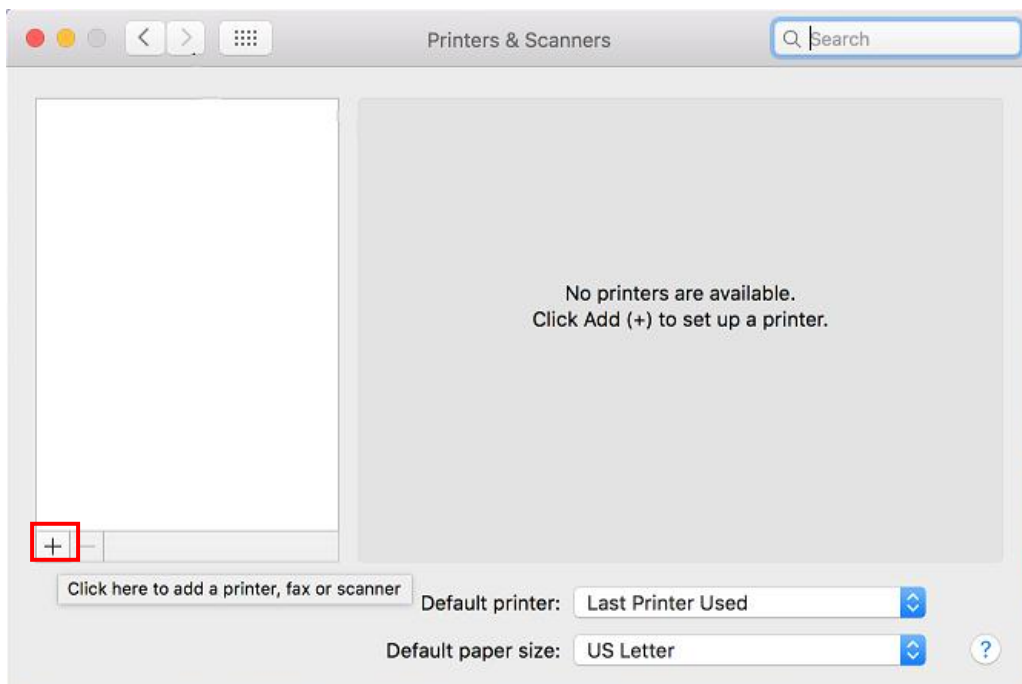
It will show as below:



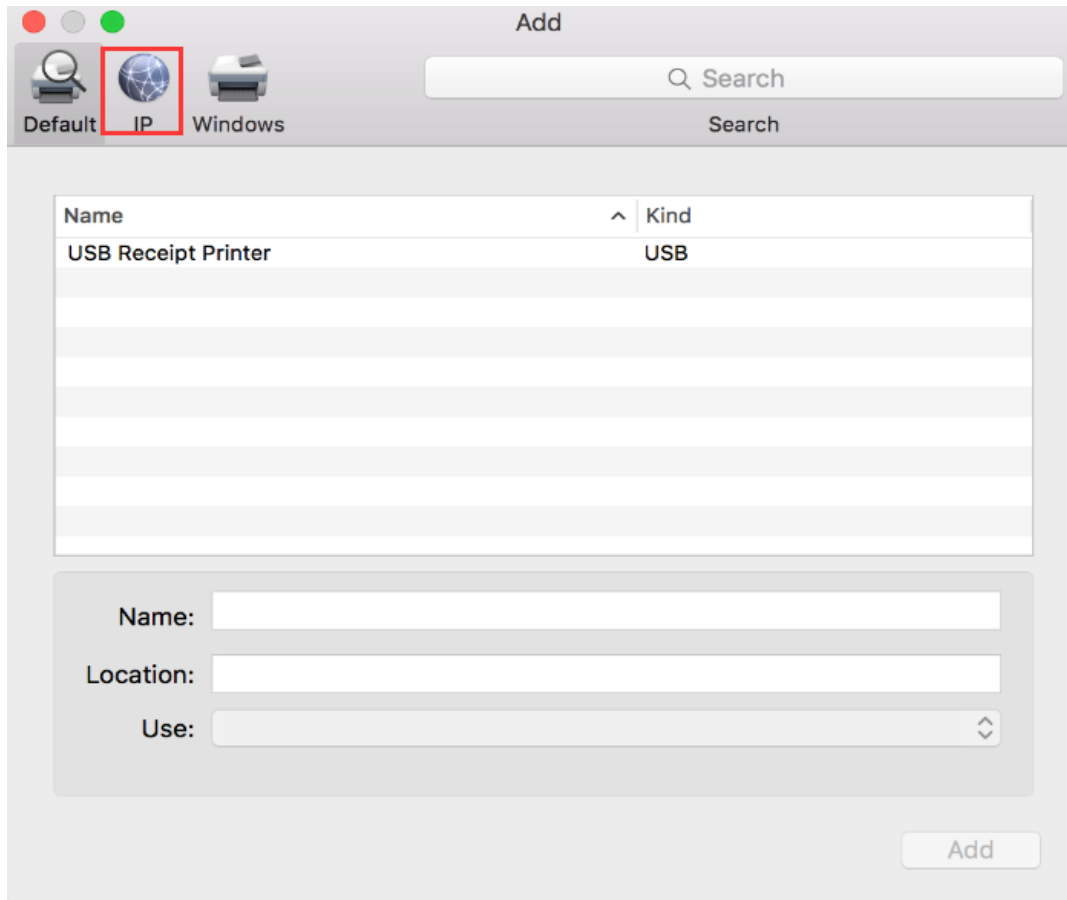


Please select “Printers & Scanners” and open it.

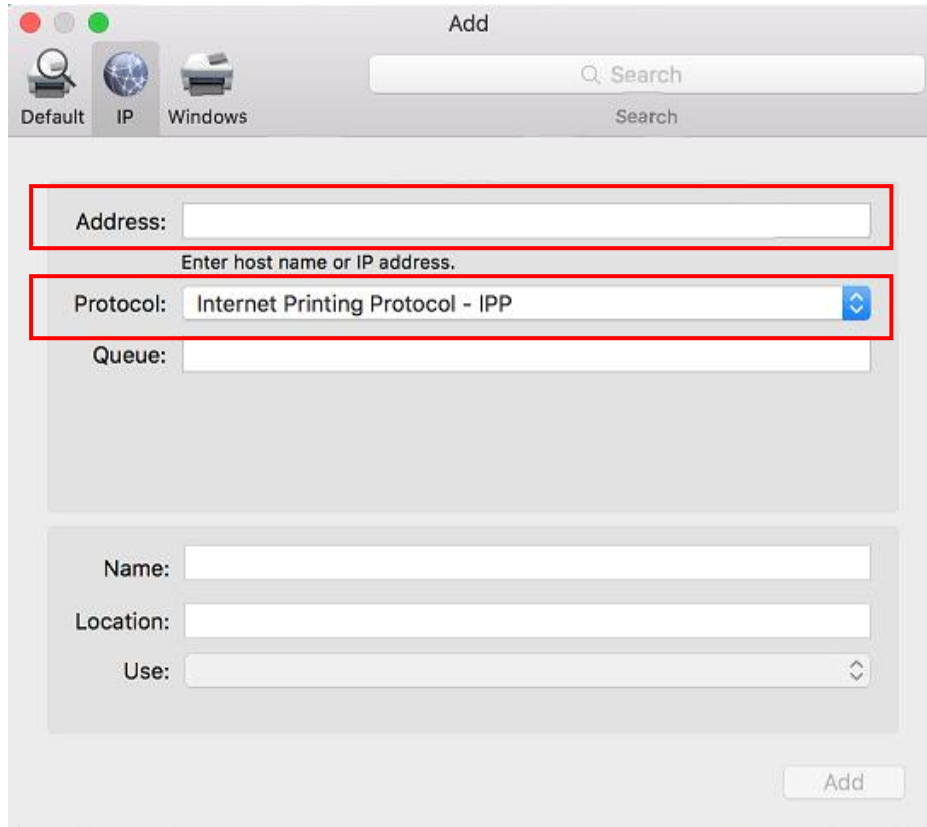
Then, it will show as below:



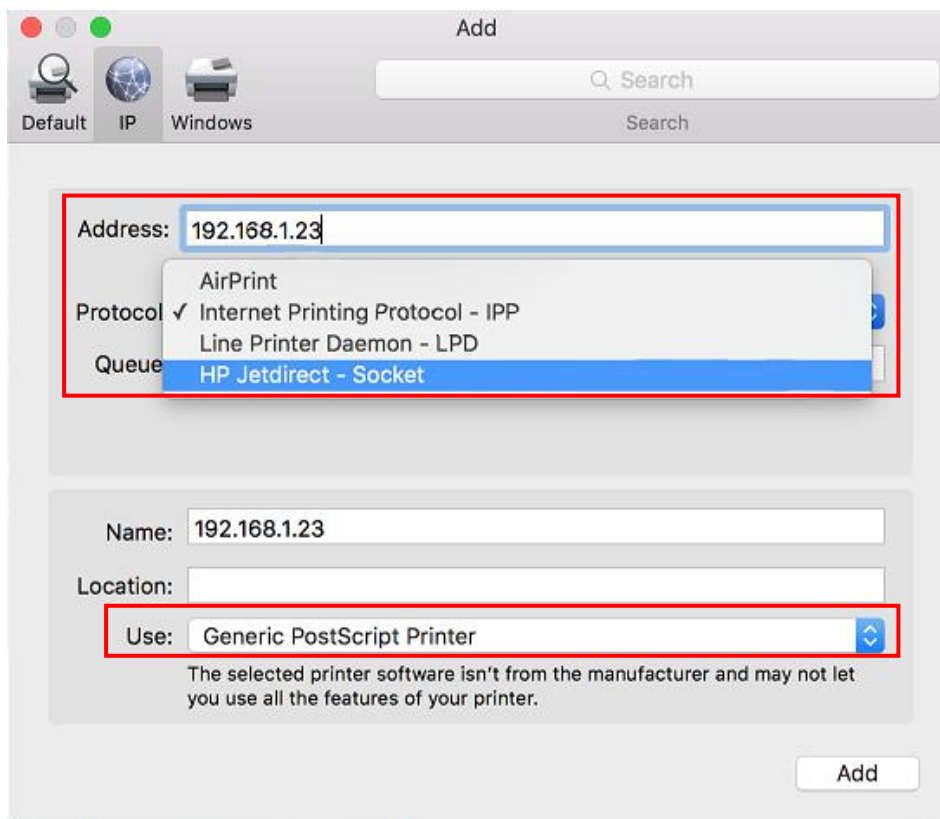
Please click “+”, it will show as below:



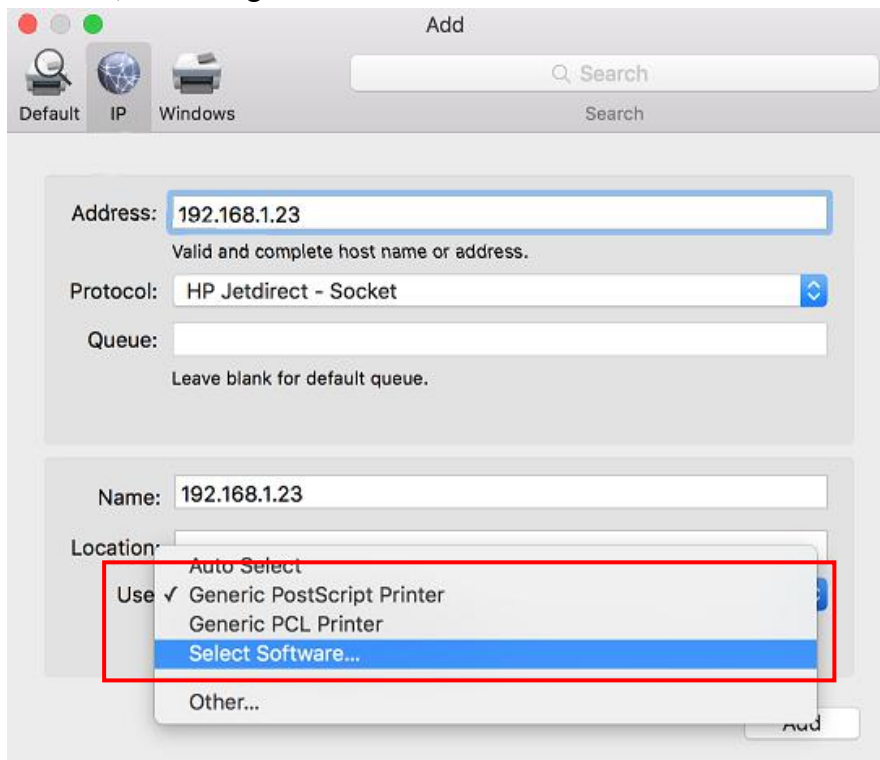
Select “IP”, and it will show as below:



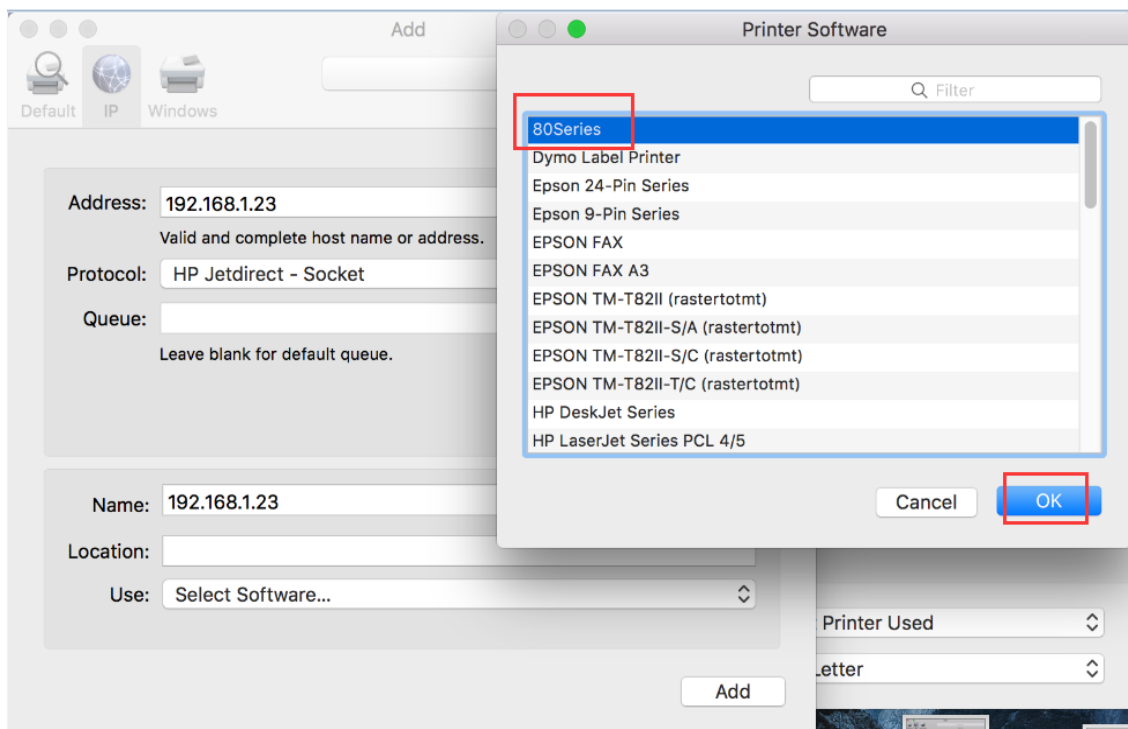
Please enter the Printer IP address and change the “Protocol” to “HP Jetdirect - socket”.



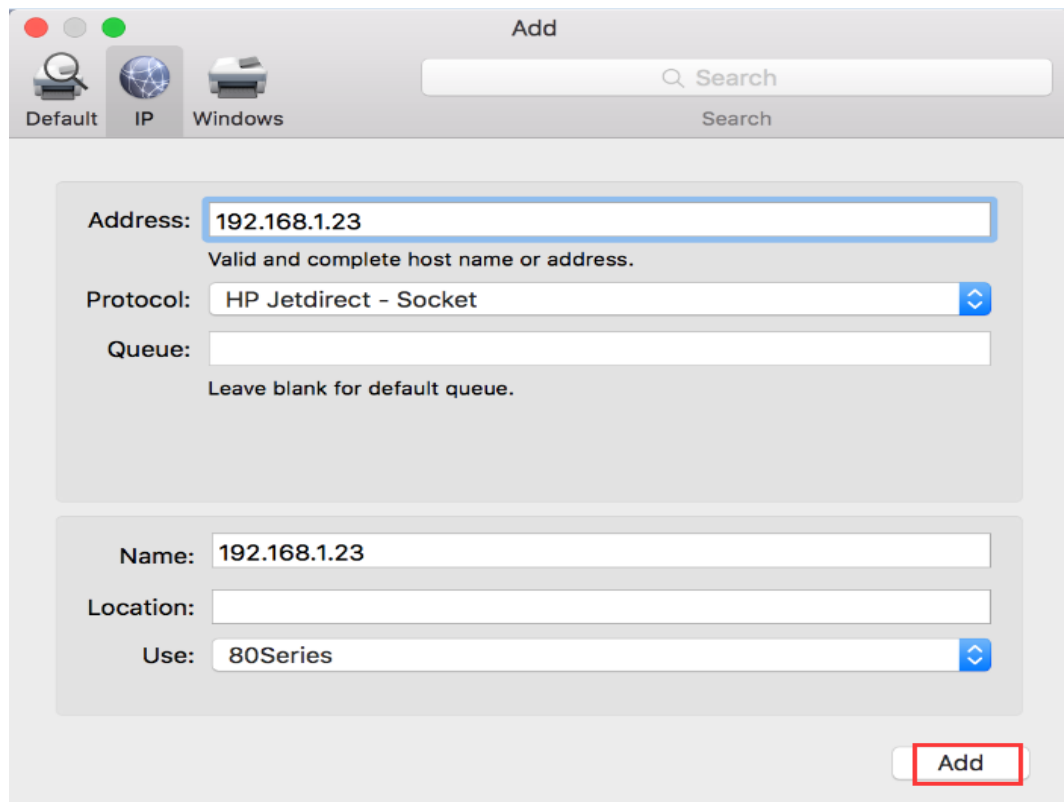
Select “Use”, and change it to “Select Software...”



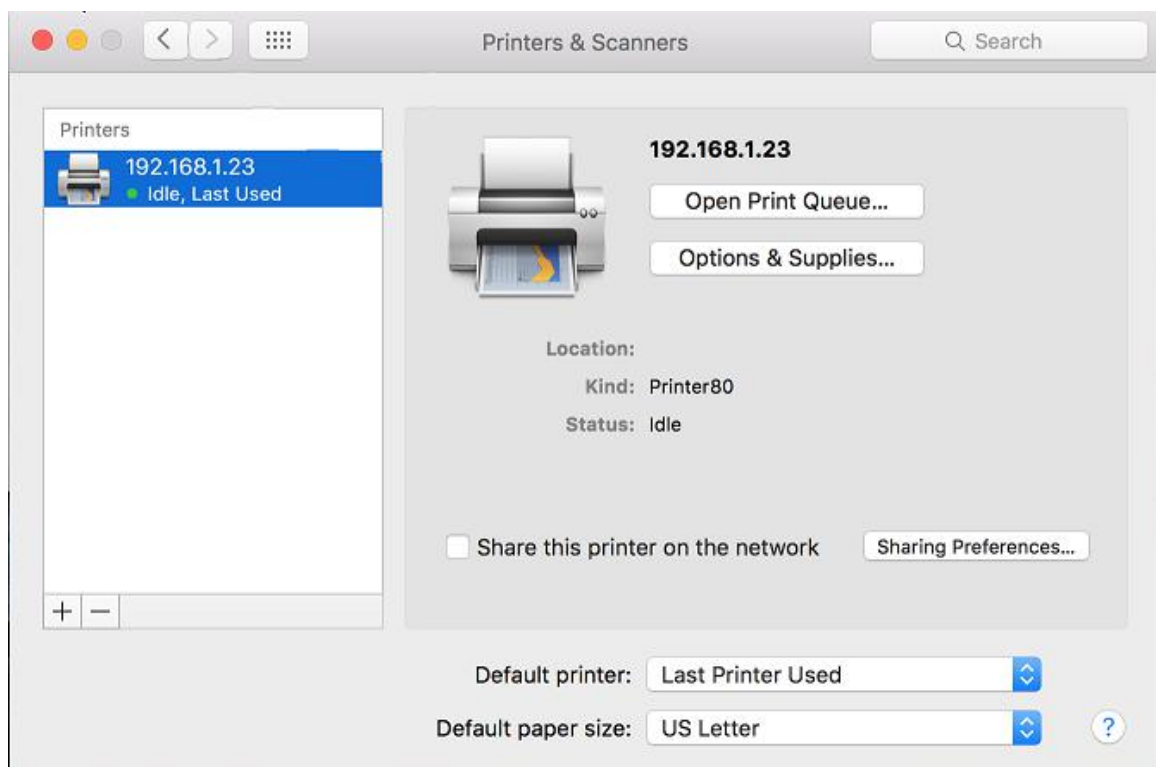
Then it will show as below:



Change it to “Printer80” and click “OK”, it will show as below:



Click “Add”.



Then the Ethernet Printer will be added successfully.

---

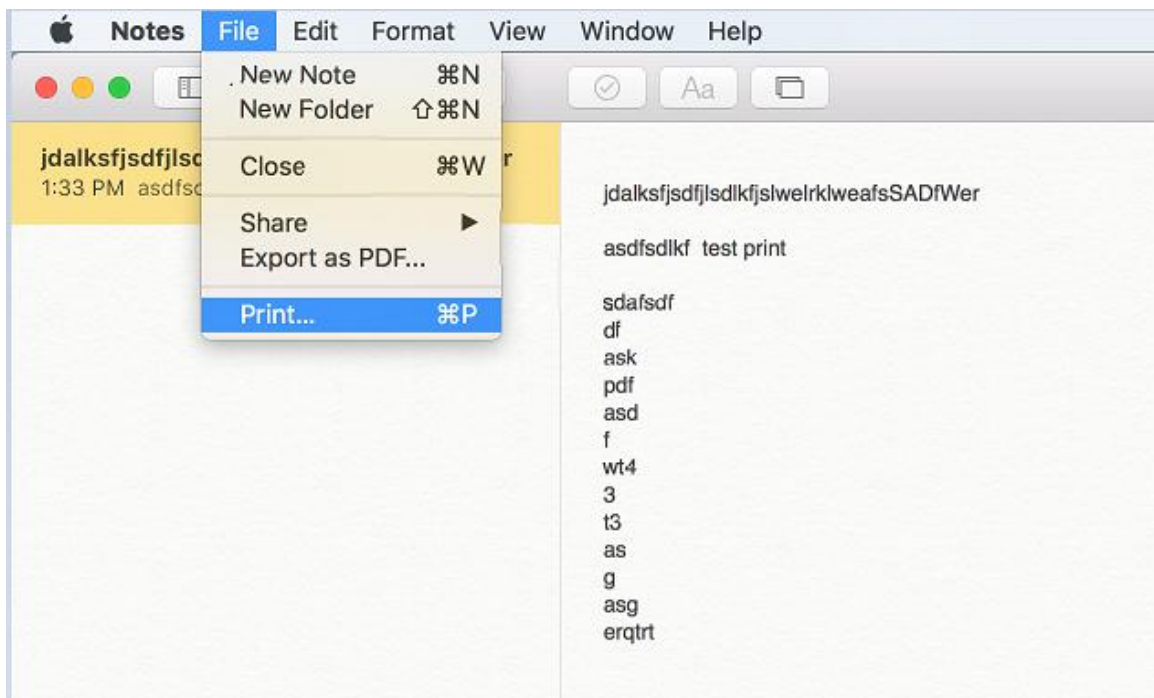
## 2.3 Check the Printer

After add the USB or Ethernet Printer, you can printer something to check if the printer connects the Mac OS.

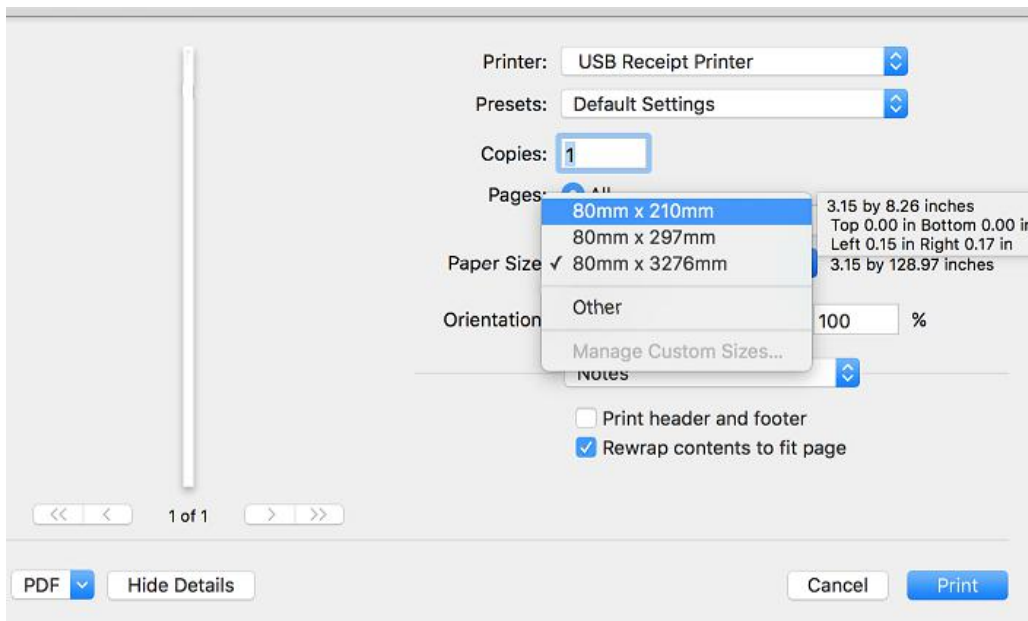
Please open the “Note” and add anything in it.



Then click “File” to select “Print...”

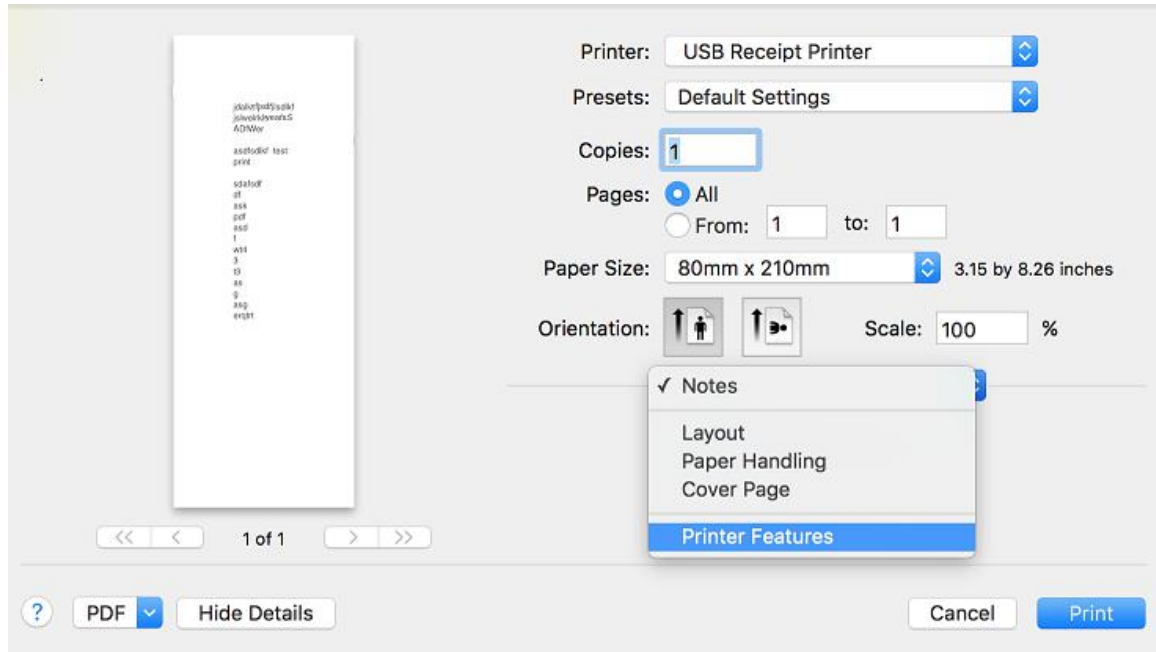


It will show as below:



---

Please select Printer to the printer that you are using and select the correct Paper Size. Select the “Notes”, and it will show as below:



Select “Printer Features” and click “Print”, then the content will be printed successfully.