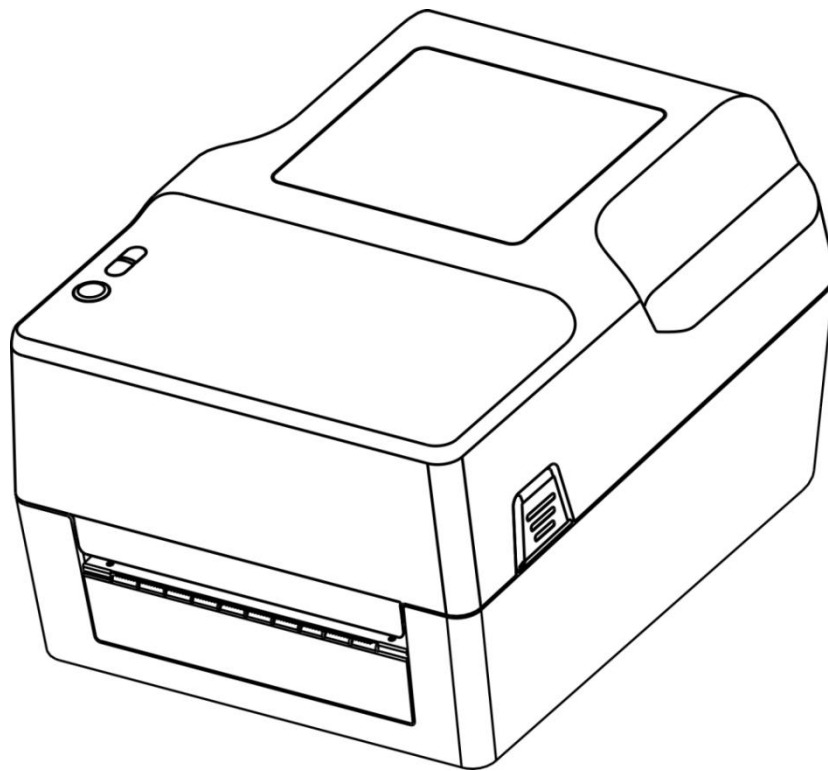

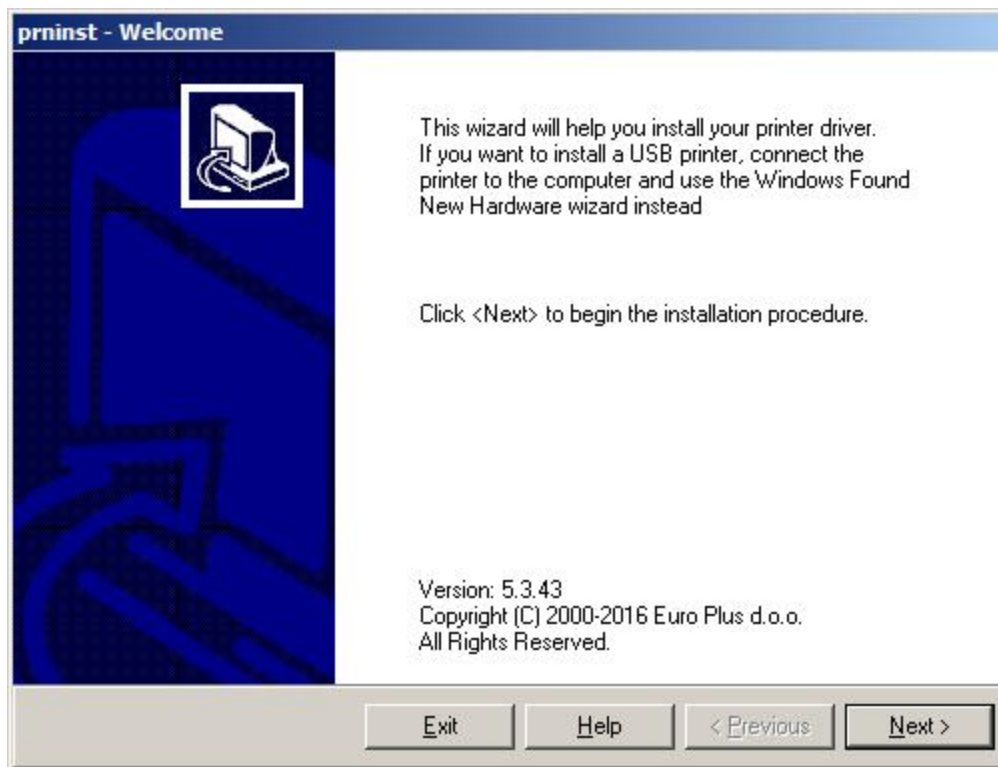


RP400\RP500 Thermal Transfer Barcode Printer

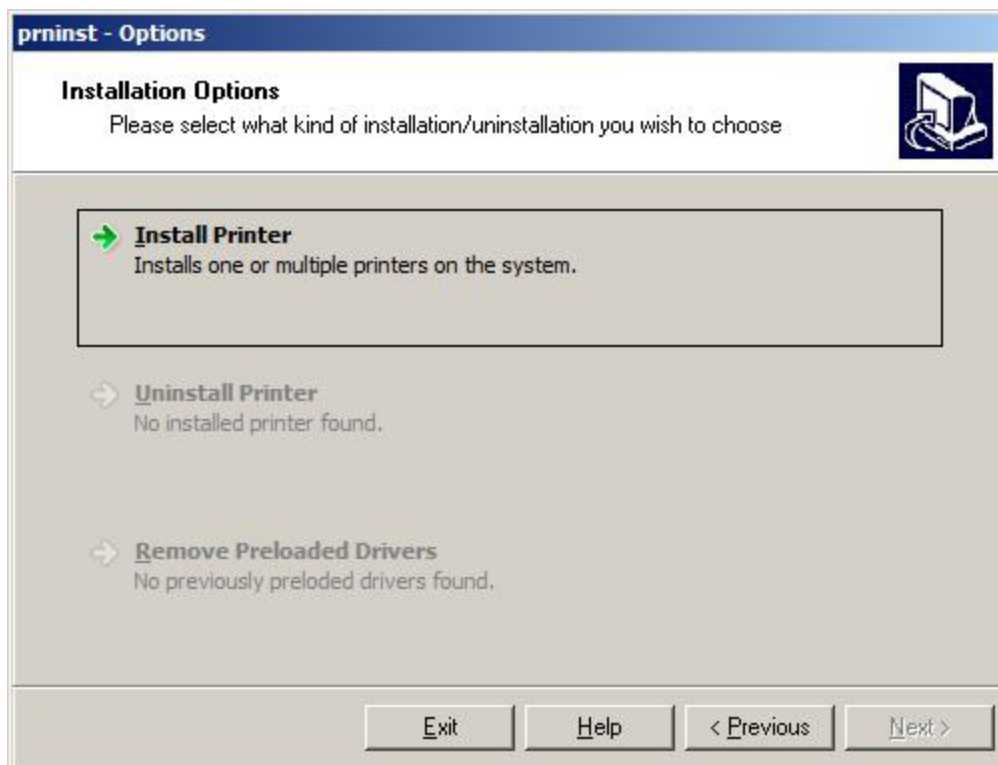
Driver installation instructions

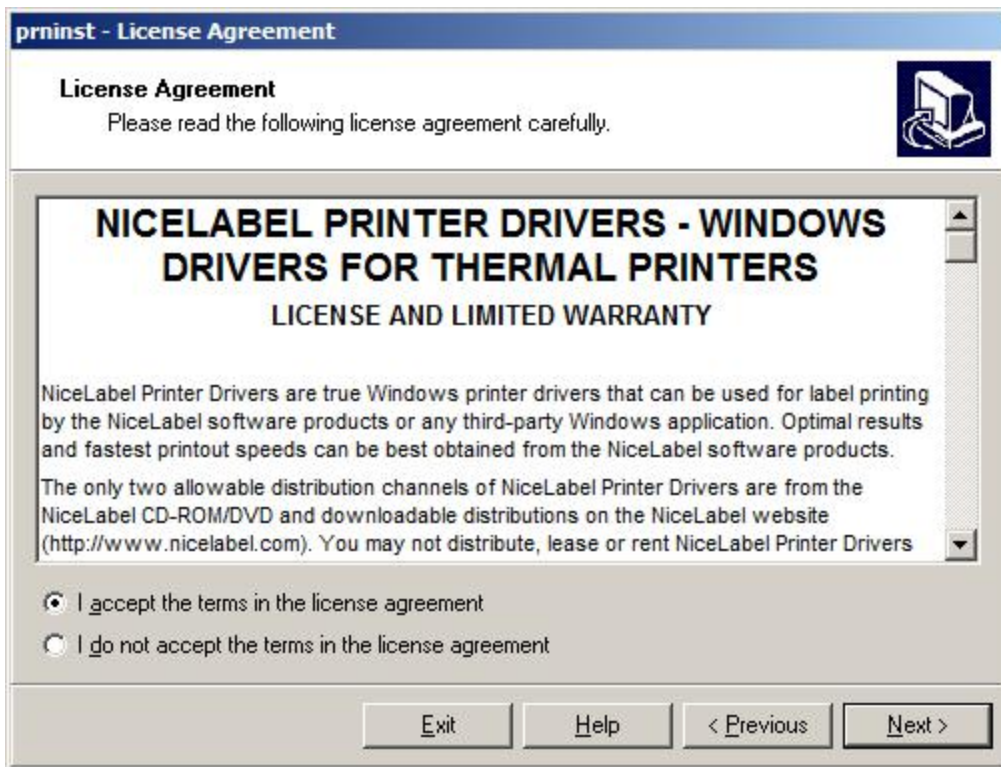


Double click to run  PrnInst and install the bar code Printer Drive



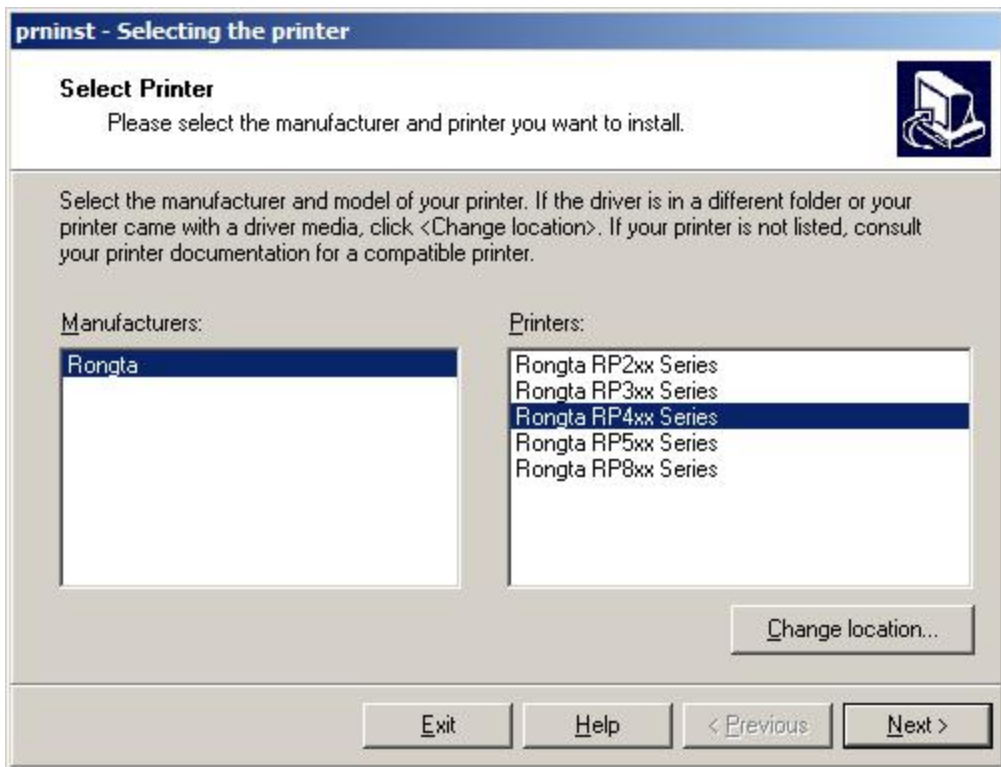
Click "Next", and select Install/Uninstall.





Select "Install Printer" to view the License Agreement.

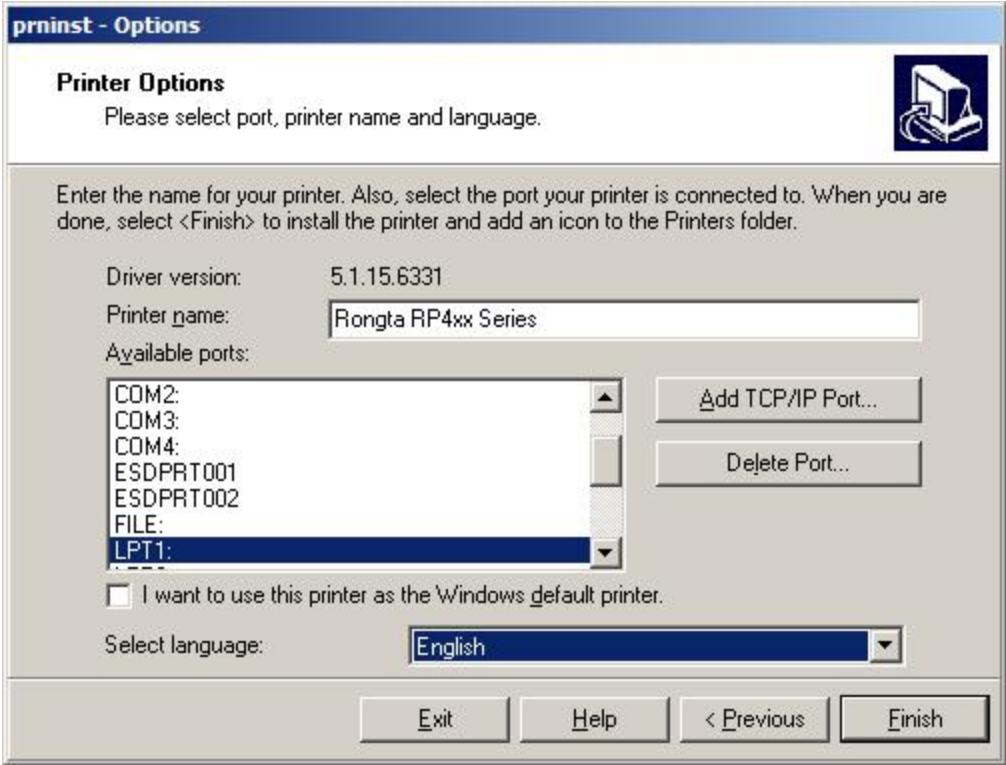
Click "Next", as shown in the figure below:



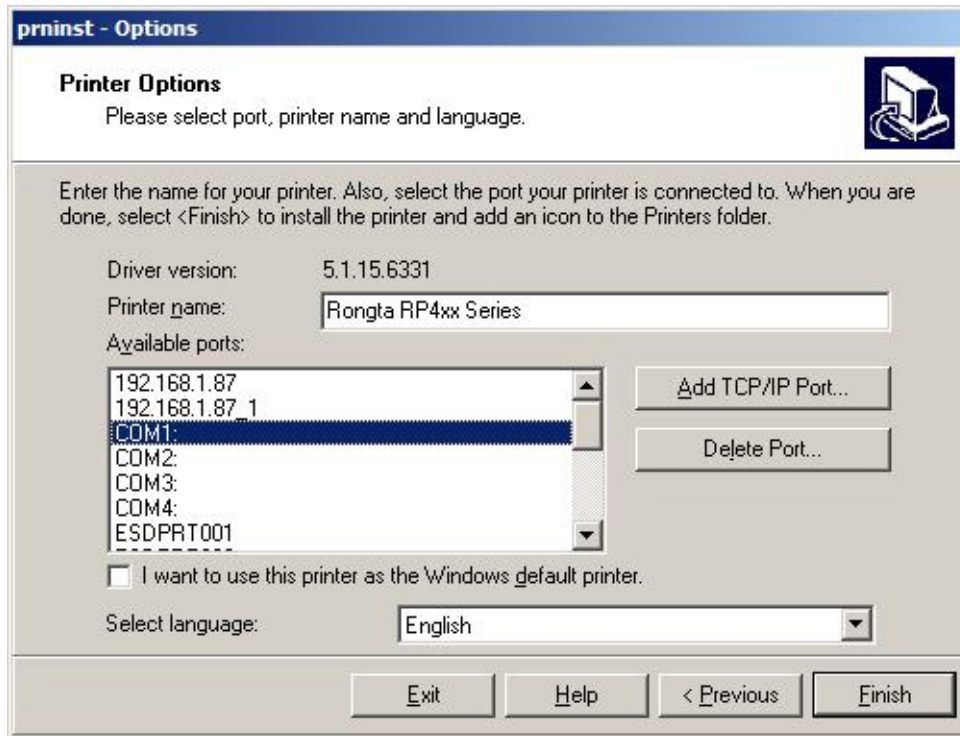
Select the printer driver of the corresponding model. Take RONGTA RP4XX as an example.

Select the communication port, and select different ports according to the different data connection lines.

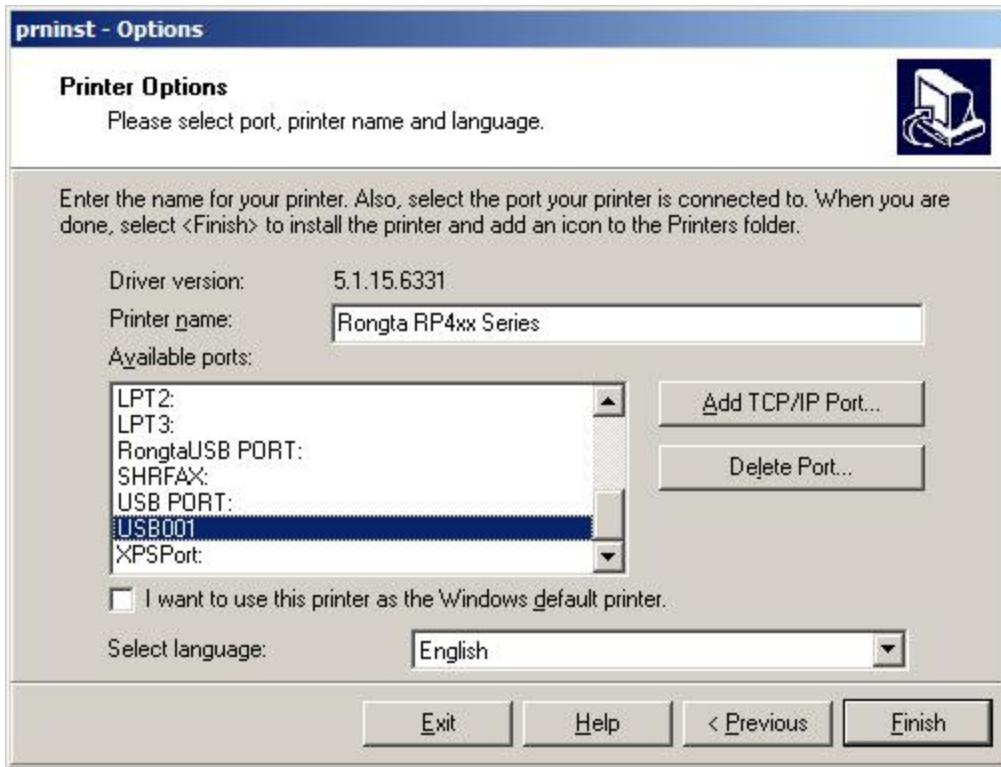
Please select LPT1 for parallel port connection, and select the port according to whether the machine is expanded.



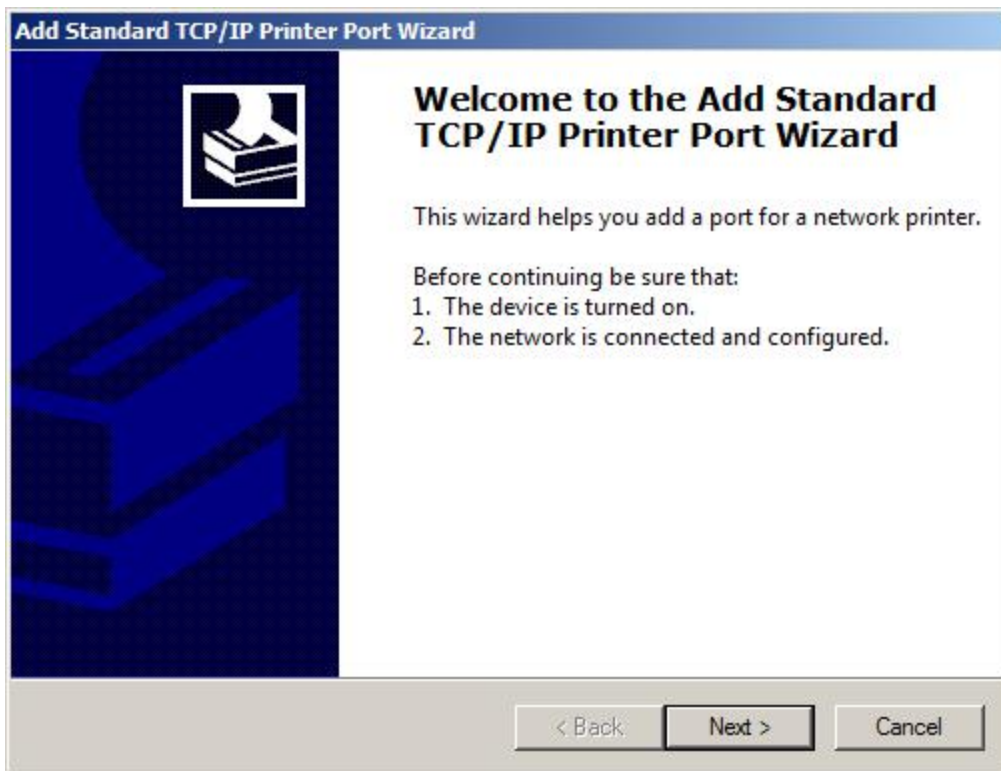
Please select com for serial port connection



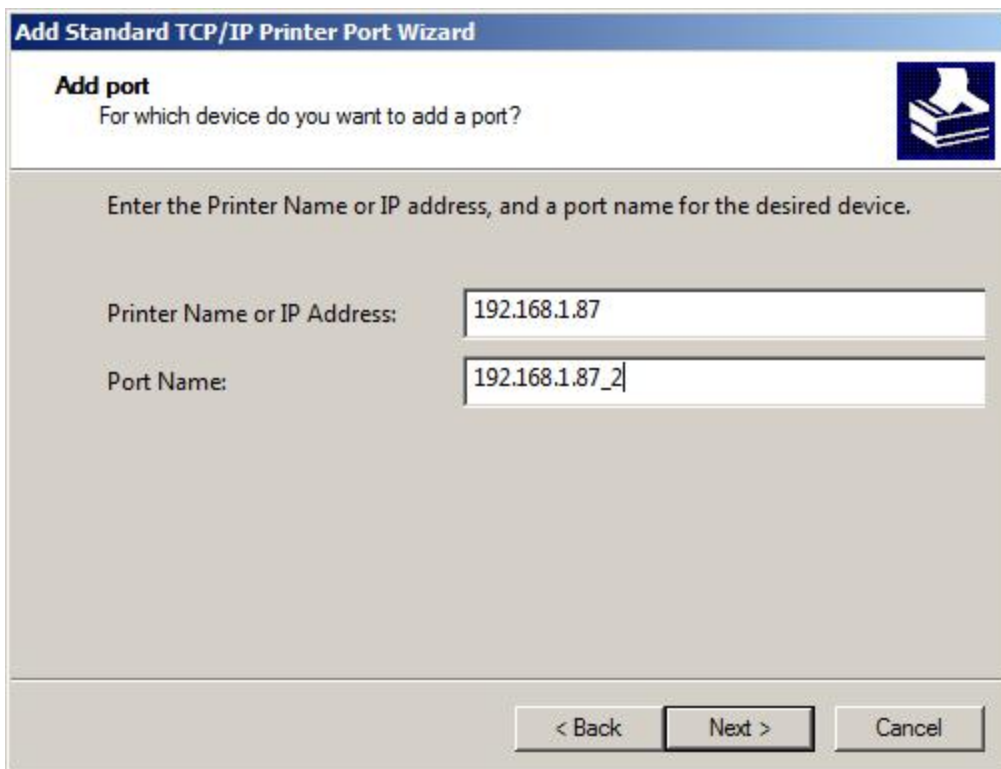
Please select USB for USB cable connection. Please note that the USB interface is a virtual printing port of the system. In the actual operation, you need to ensure that the printer USB cable is connected and the printer is powered on. If a computer is installed with multiple USB cable connected printers, there may be multiple USB ports, such as USB001, USB002 ... USB005 ..., etc. Adjust the port if you cannot print after the driver installation is completed.



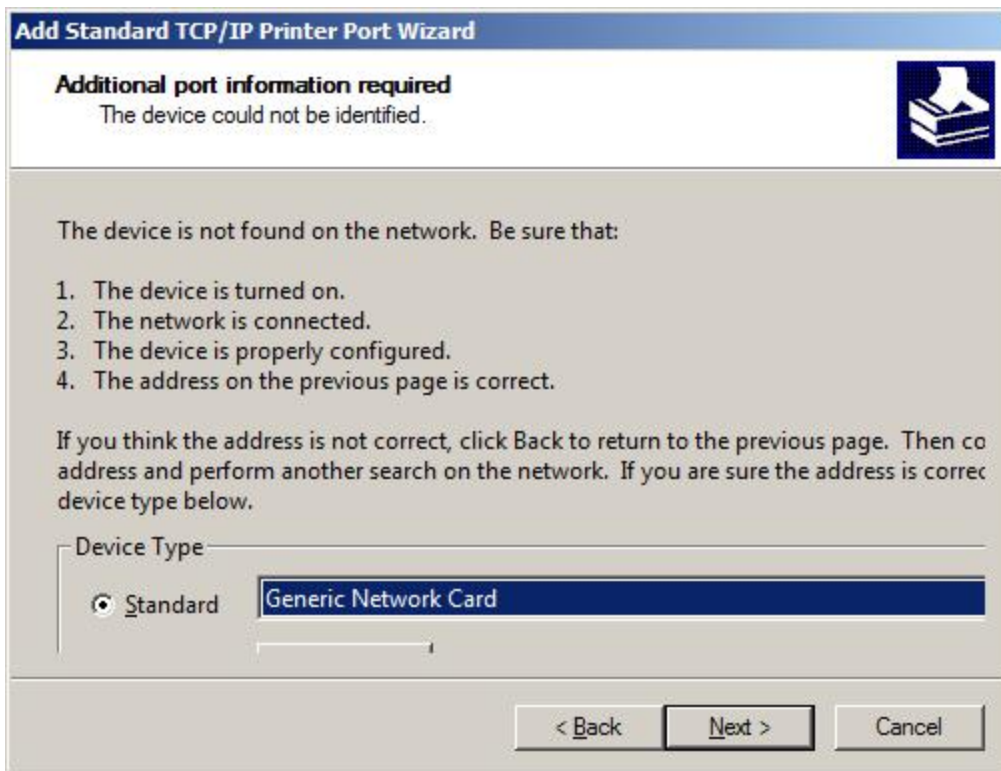
To use the network port, please choose to add a TCP / IP port, as follows:



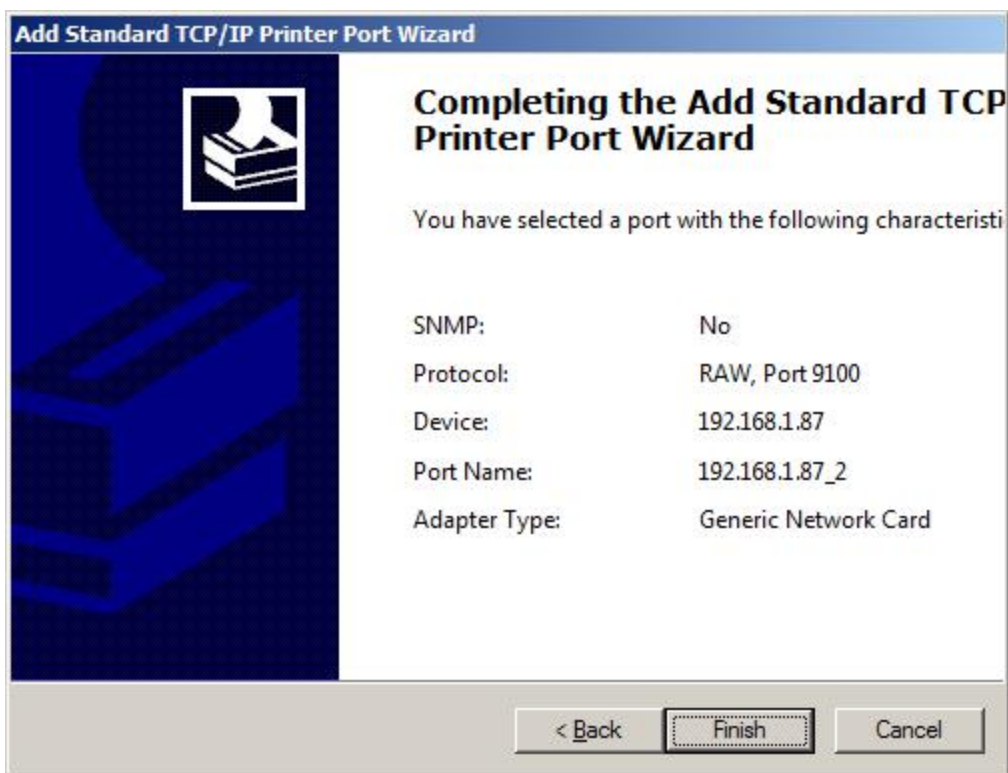
Then click “Next”, as shown in the figure below.
Enter the “IP address” of the printer, as shown in the figure below.

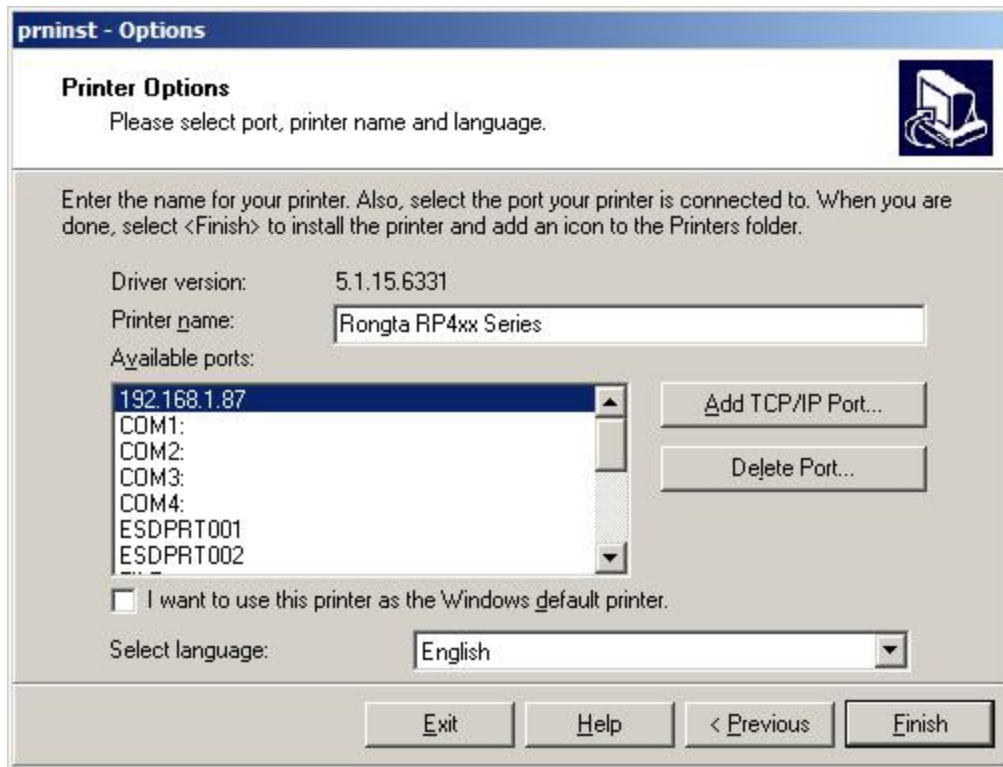


Then click “Next”, as shown in the figure below.

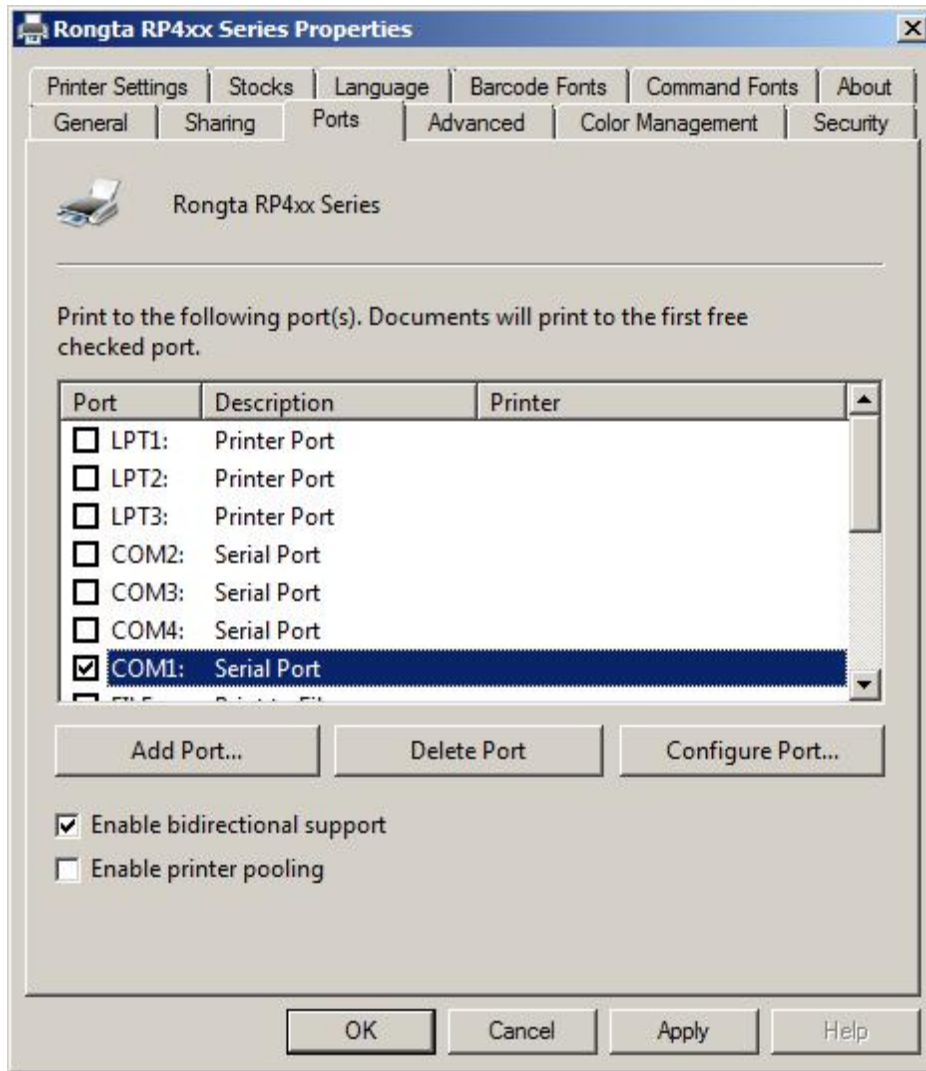


Then click “Next”, as shown in the figure below.

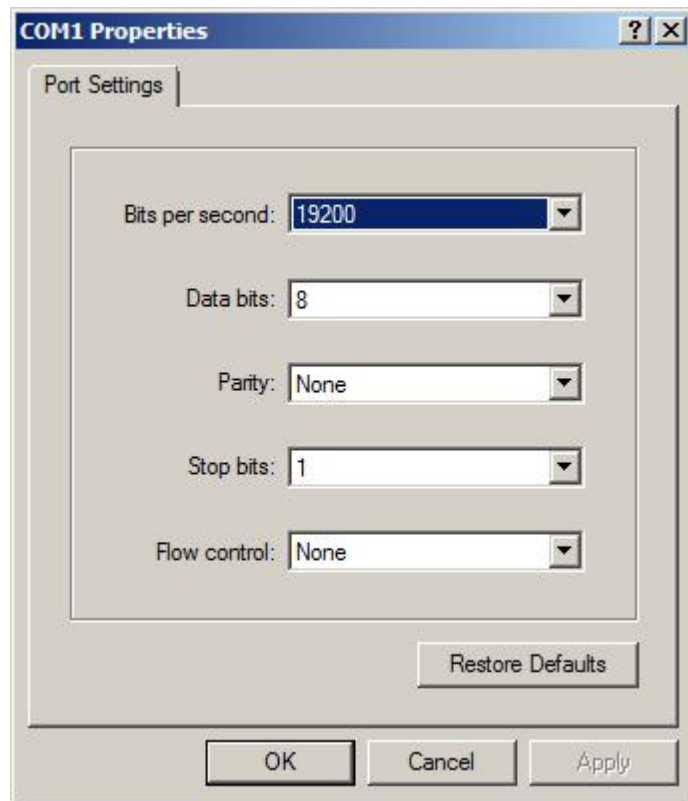




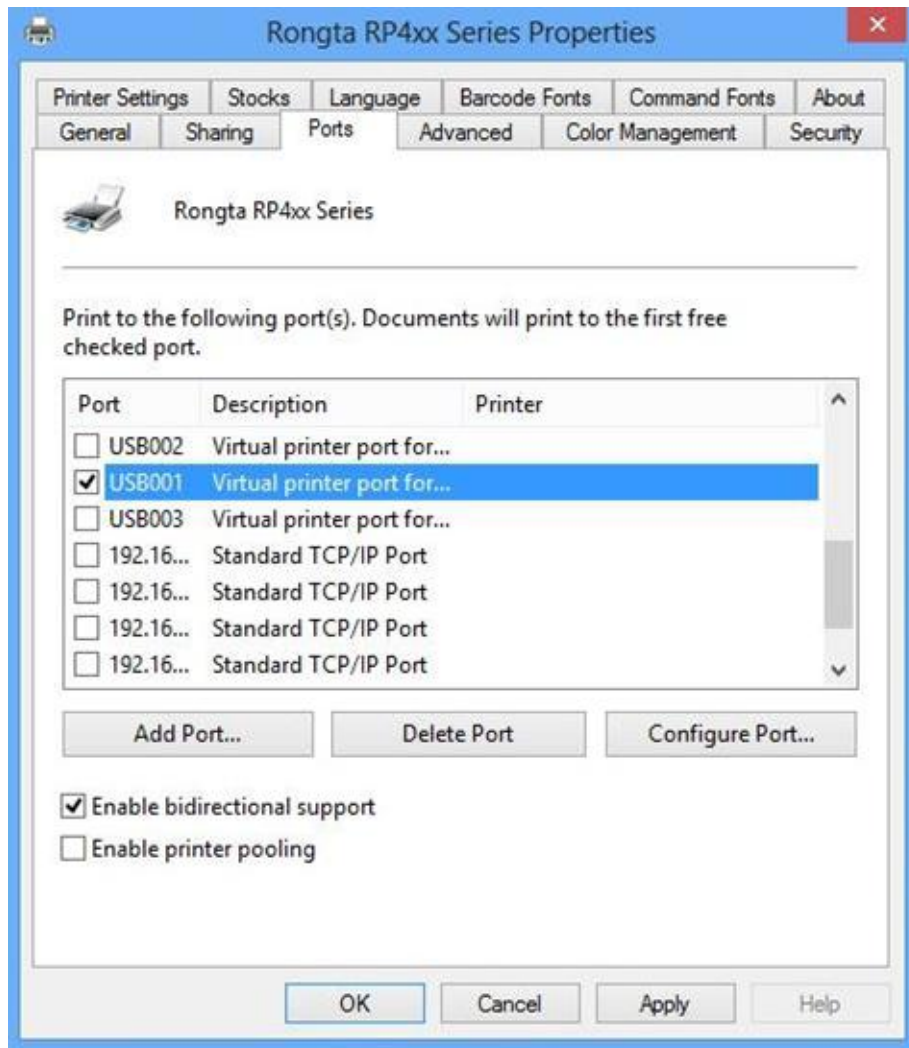
Finally click “Finish” to add the Ethernet communication port successfully which can be selected, as shown in the figure below: If you select the serial port (COM port), you need to select the port tab in the installed driver properties page, and then select the “Configuration Port”.



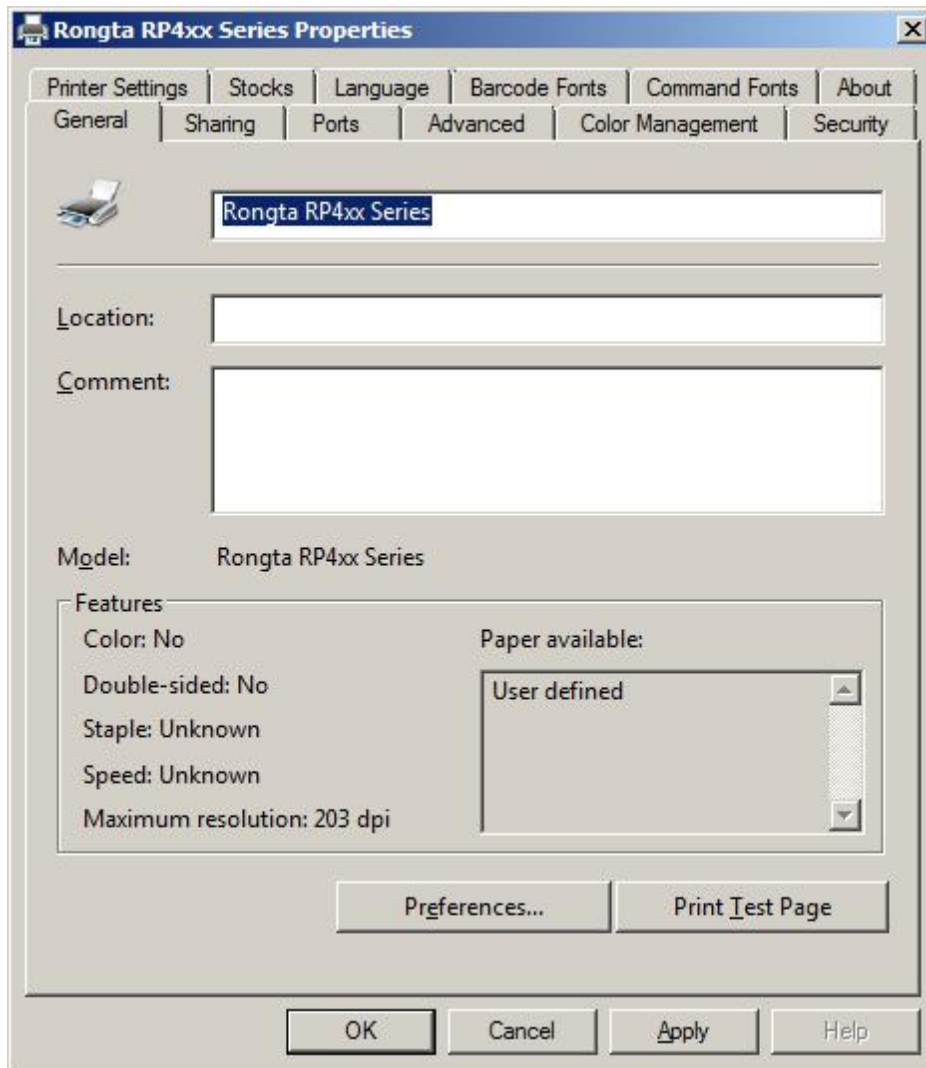
Select serial communication parameters “bits per second”, “data bits”, “parity check”, “stop bit”, “data flow control”, etc. The factory default parameters are shown in the figure below. You can view the serial communication parameters information, such as “SERIAL 9600,N,8,1”, on the printer power-on self-test page.



If there are multiple USB virtual ports within the driver port when using USB connection, as shown in the figure below:



Follow the following steps to try to connect the printer:
First, click “Print Test Page” in the “General” tab of the Printer Properties.



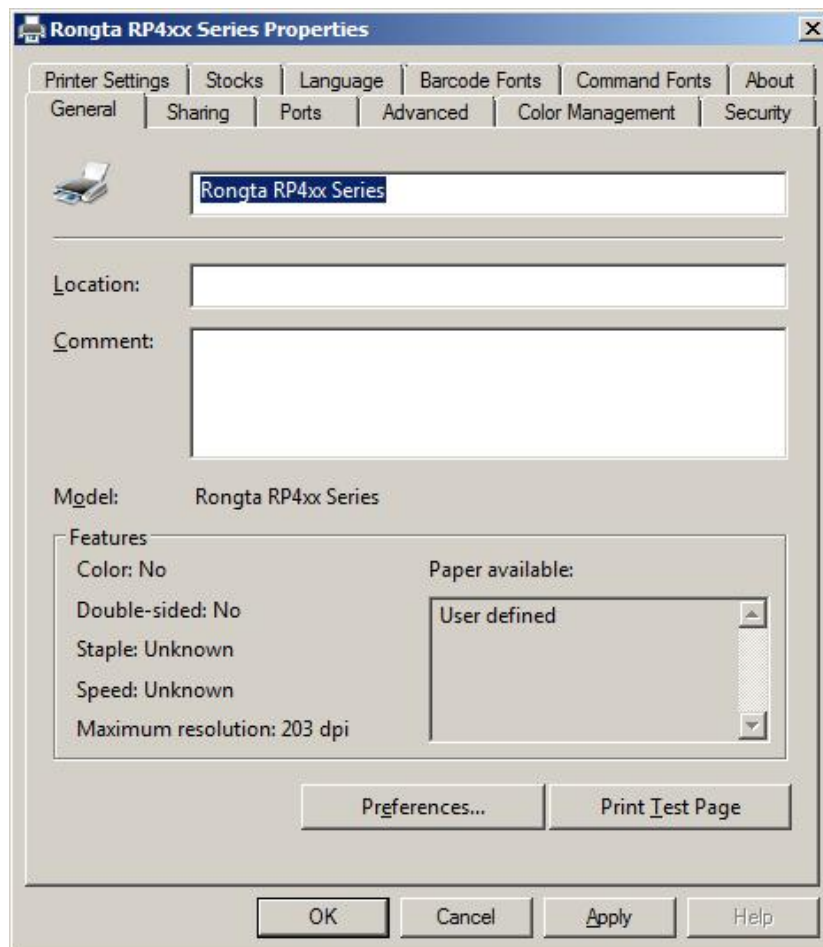
Then, check the status of the print task. If normal, the test page will disappear in a short time and the printer will print. If the port is incorrect, the status will show “Error-Printing” as shown in the figure below:



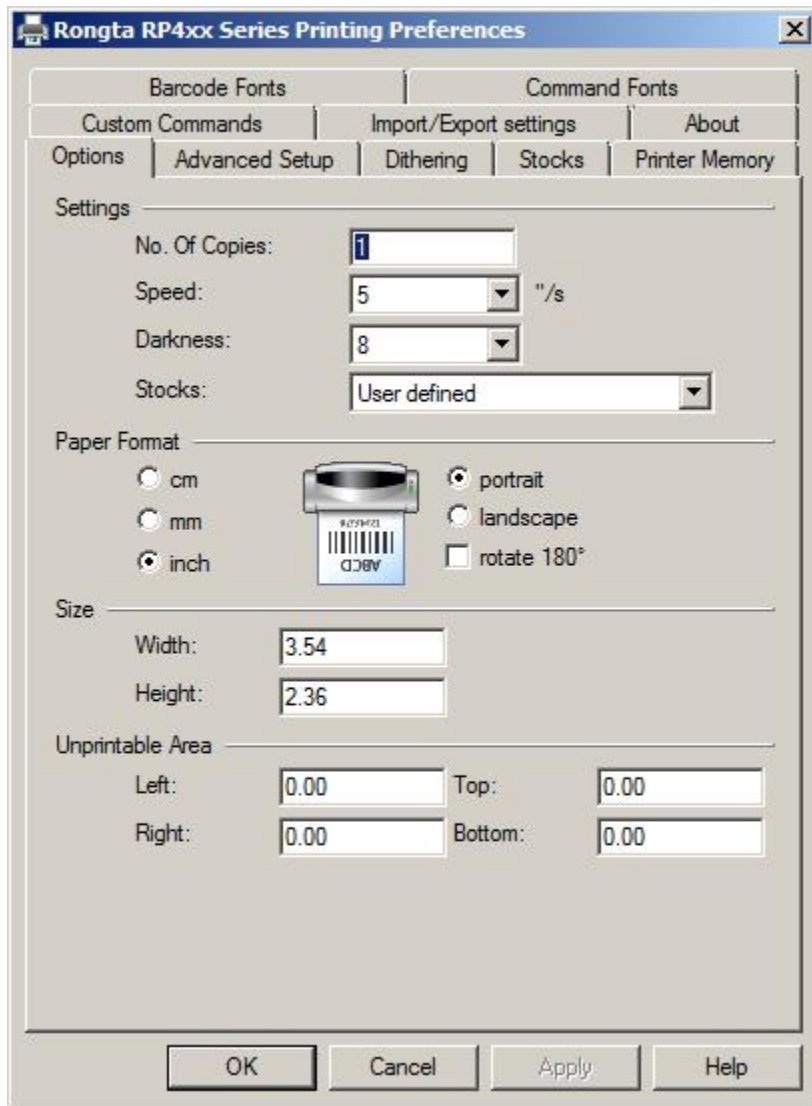
Go back to the “Port” tab of the Printer Properties, check another USB virtual port, click “Apply” in the lower right corner and wait for a while, the test page task will restart. If the port corresponds, the task will disappear, and the printer will print. If there is still an error, repeat the check operation until printing is completed. After the above steps, the driver installation is completed.

Details on the use of the driver.

Set the correct paper parameters and printing method:

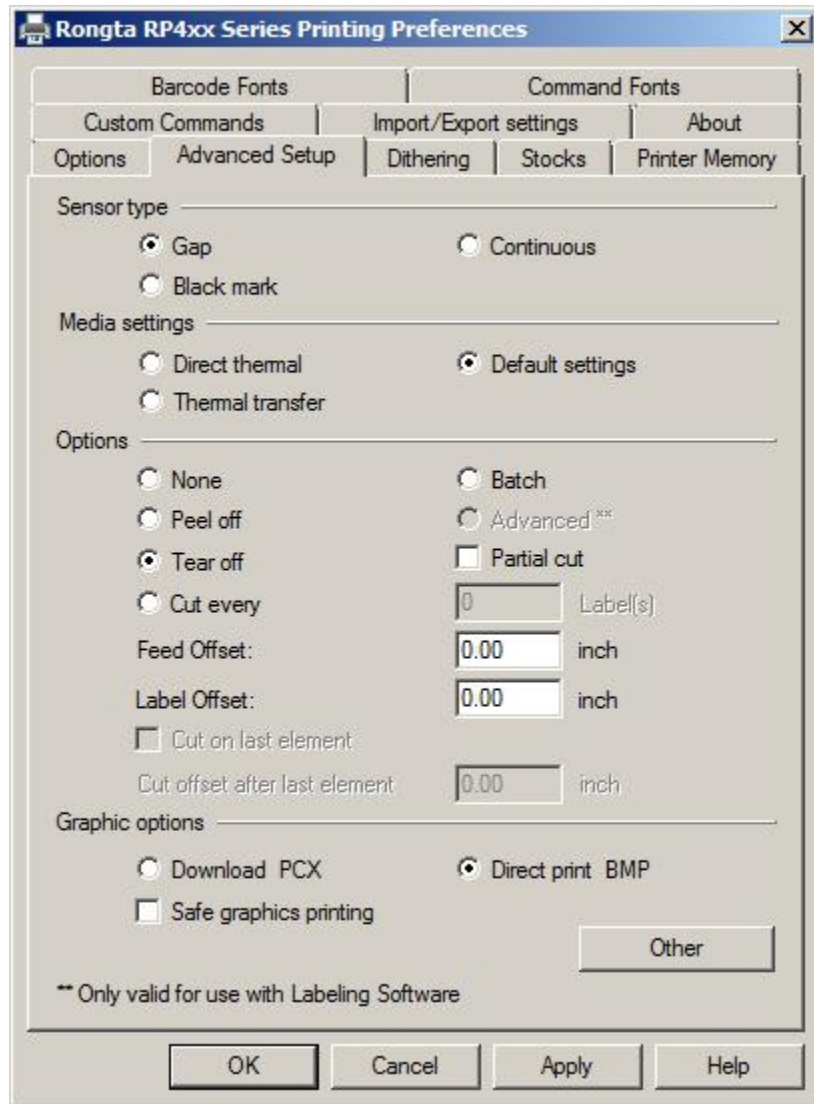


Open the “Properties” window of the printer, as shown in the figure below. Click “Preferences”.



Adjust “Print speed” and “Print density” according to the actual paper and consumables used; especially when using the thermal transfer printing method, the conjunction of print speed and density has an impact on the printing effect. In the “Size” field, enter the size of the actual paper or printing area. If it is label paper, it only indicates the size of the printable format and does not include the backing paper.

Click the “Advanced Settings” tab.

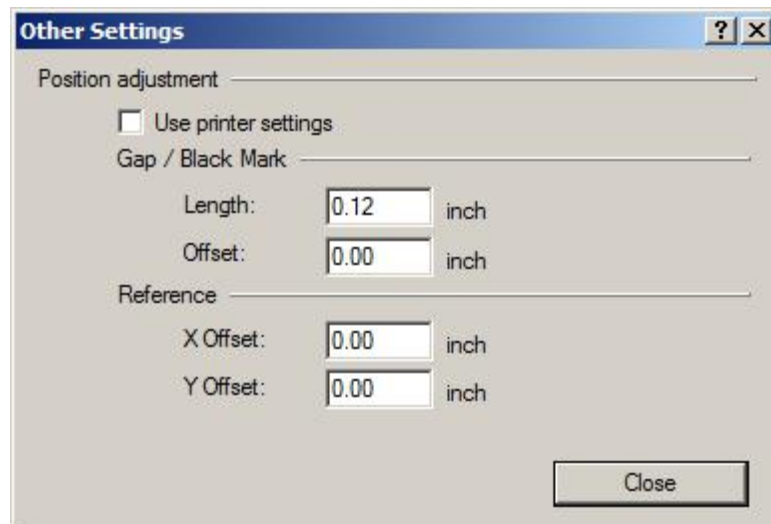


Select according to the type of paper actually used. For label paper with spacing, select “Spacing”; for paper with black mark on the back, select “Black Mark”; and for continuous paper, select “Continuous”.

For the media setting field, it is recommended to keep the default settings because the printer will automatically detect which media is used after the printer is turned on, and subsequent printing will continue based on the current media. Manually specify a method if necessary.

About the settings of where the paper will stay after the task is completed in the options field, “None” indicates that the paper stays after printing is completed without any operation. Stripping, cutting, batch and partial cutting functions are not supported by Rongta printers.

Click “Others”



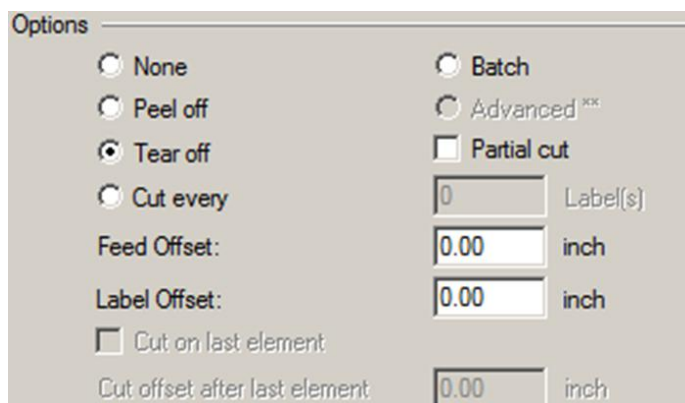
Adjust the “Length” parameter in the “Spacing/Black Mark” field according to the height of the gap between labels on the label paper used by the user.

After completing the above settings, click “OK” to close the “Preferences” settings. In the “General” tab of the driver properties, click "Print Test Page" to observe the print quality after the above settings, and determine whether it conforms to the paper material and size.

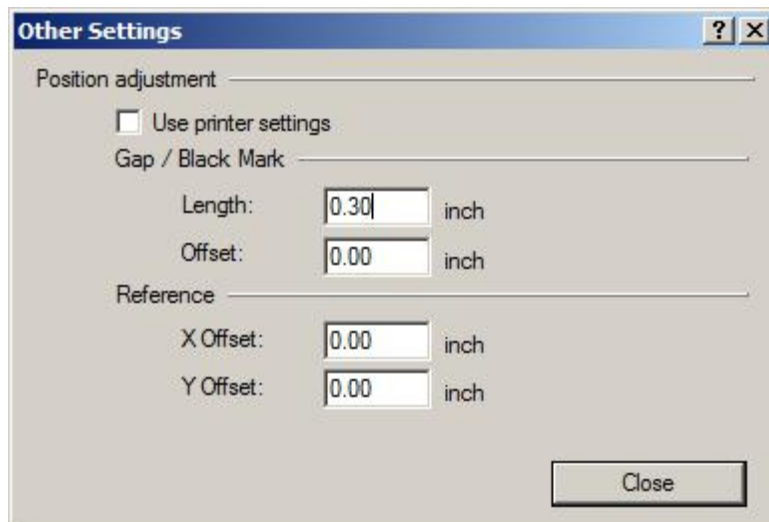
Adjustment of label content offset:

After setting the correct parameters above, label content offset may occur due to too small size of labels or inaccurate label specifications. If there is no margin to move in the editing interface, user can accurately correct it through the following parameters:

If only the label has upward or downward offset, select the printer “Properties” - “Printing Preferences” - “Advanced Settings”, there is a label offset parameter setting in the “Option” field, and this parameter can be filled with a positive or negative value. Take the paper exit direction of the machine as a reference, a positive value means backward offset, and a negative value means forward offset. After adjustment, continuously print multiple labels to observe whether the offset is correct.



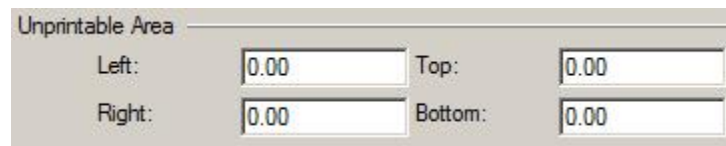
If the label content has left/right offset in addition to the upward/downward offset, you can select the printer “Properties” - “Printing Preferences” - “Advanced Settings”- “Others”, and set the reference coordinates offset. For the label direction, if only the vertical is selected, the coordinate origin is in the upper left corner of the paper exit direction, and if the label rotates 180 degrees vertically, the origin is in the lower right corner of the paper exit direction. Similarly, if only the horizontal is selected, the origin is the upper right of the paper exit direction, and if the label rotates 180 degrees horizontally, the origin is in the lower left corner of the paper exit direction. This parameter only accepts positive values, so please choose the direction and offset carefully when adjusting, and try to use it with the above label offset to achieve the desired effect.



Non-printing area:

When using the customized label paper, if the peripheral area has printed content or if you don't want to print any contents in the area, you can set the following parameters:

Select printer “Properties” - “Printing Preferences”- “Options”, fill in the parameters of non-printing areas according to the area size.

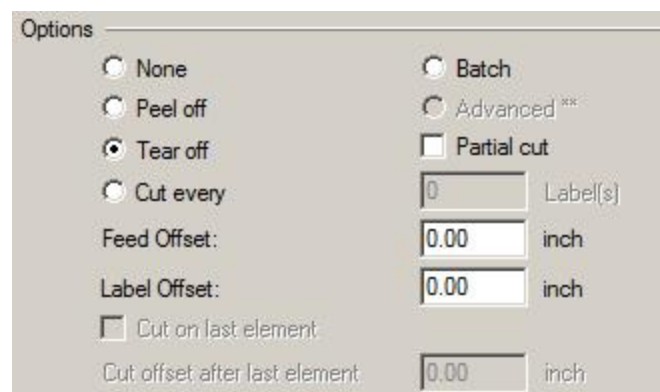


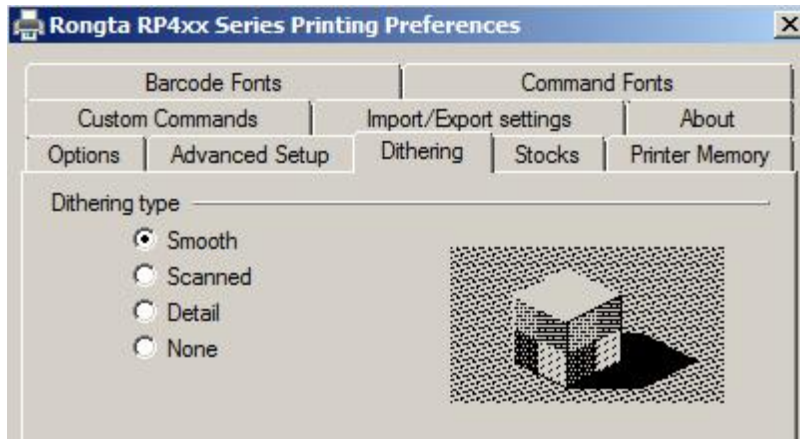
Adjustment of graphic effect:

Select the printer “Properties” - “Printing Preferences”- “Dithering”.

Select the printer “Properties” - “Printing Preferences”- “Dithering”.

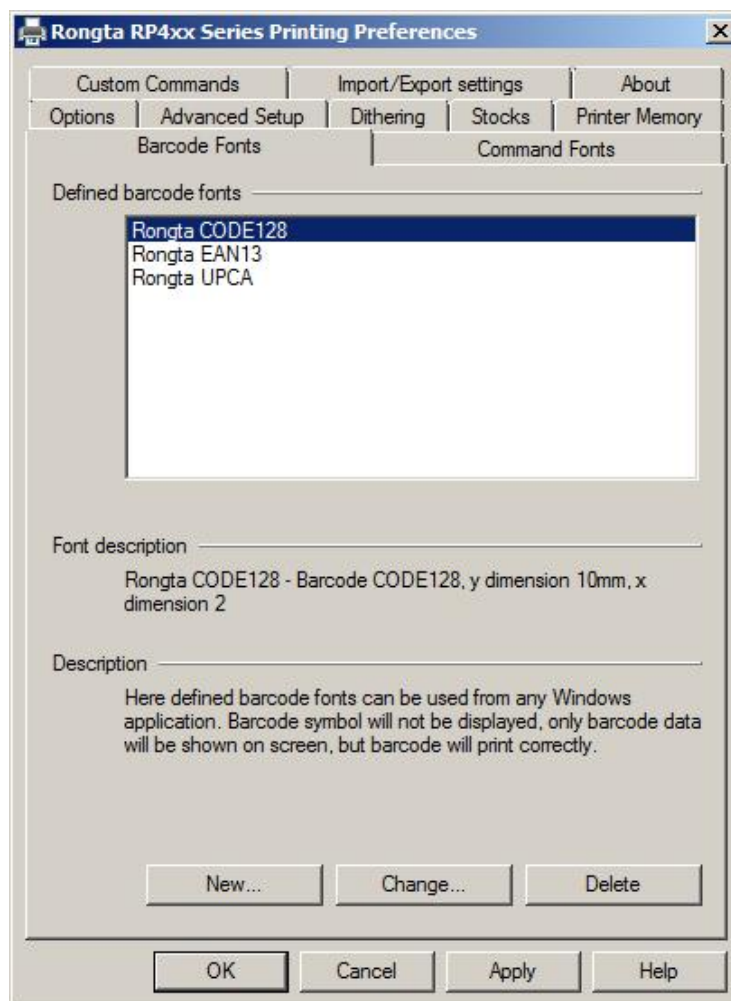
When different types are selected, the printed graphics have different print quality. Adjust according to the actual effect.



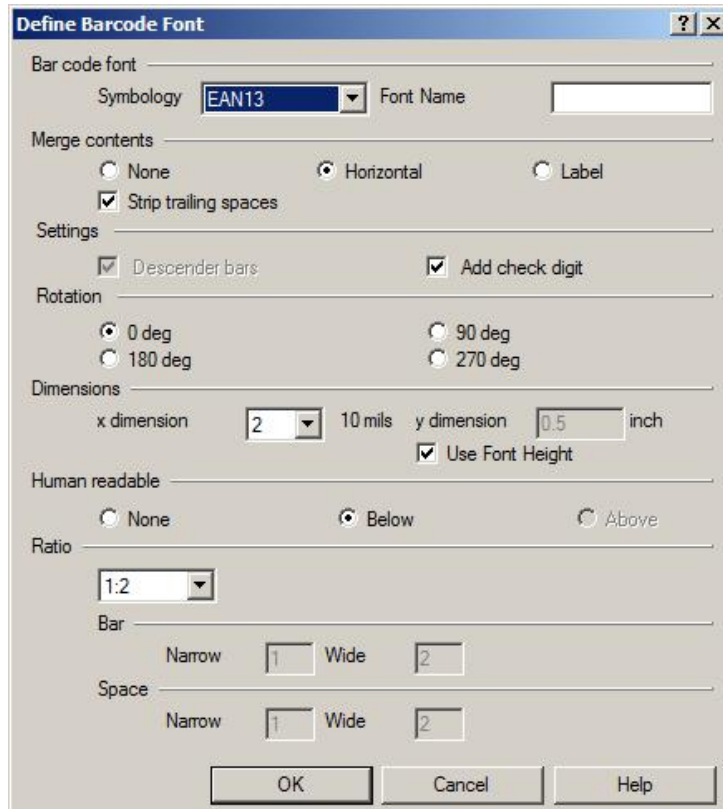


Settings of Bar Code Font and Command Font:

This setting is mainly a way to convert text to a bar code or direct command in the printer when the corresponding font is specified in the application. Select printer “Properties” - “Printing Preferences”- “Bar Code Font”



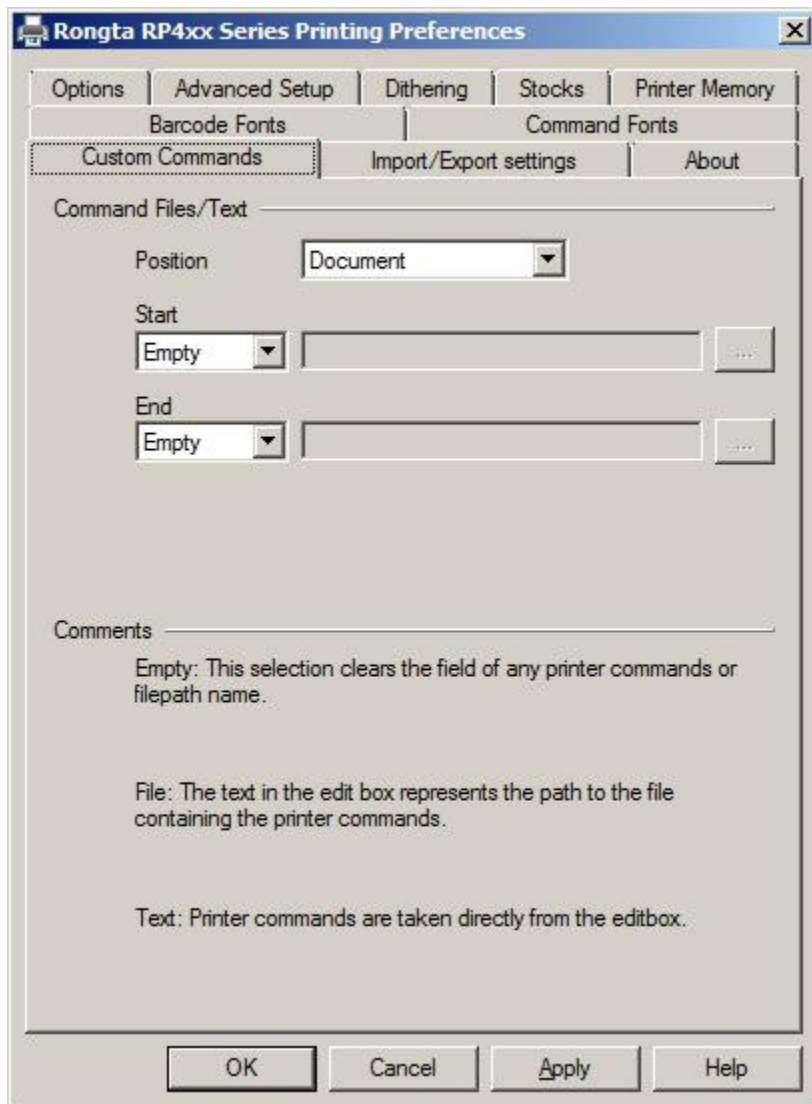
You can create, change or delete the defined bar code font. The parameters include the bar code type, direction, size, identification code, aspect ratio, etc. Command font also has similar adjustments, as shown in the figure below:




Settings of Customized Command:

Select the printer “Properties” - “Printing Preferences”- “Customized Command”

This setting page is used to insert a customized commands or command file at different locations of driver print tasks. You can add the required command before and after the document or page according to your needs. You can obtain a command from the file or directly enter a command in the input box, as shown in the figure below:



 Warning: The contents of this Manual shall not be changed at will without consent. Rongta Technology (Xiamen) Group Co., Ltd reserves the right to change the product in terms of technologies, parts, software and hardware. Please contact the dealer for further information of the product. No part of this Manual shall be reproduced or spread in any form or by any means without permission.