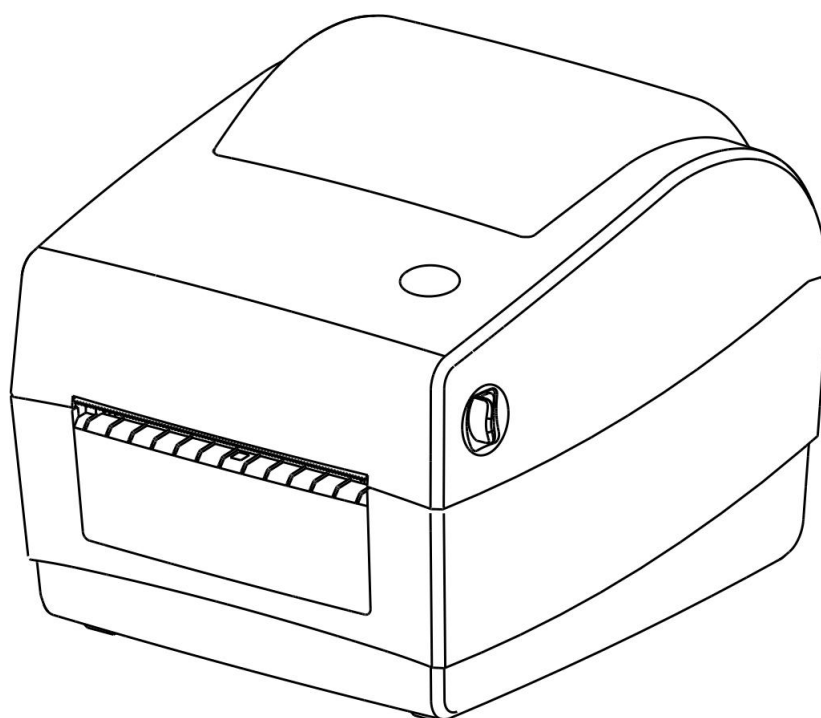


RP410\RP410Y\RP410C\RP411

Setting Integration Tool Manual



1. Manual Information

This Manual provides information on the use of the function selection software, the modification of operating conditions, etc. of this product.

2. Instruction

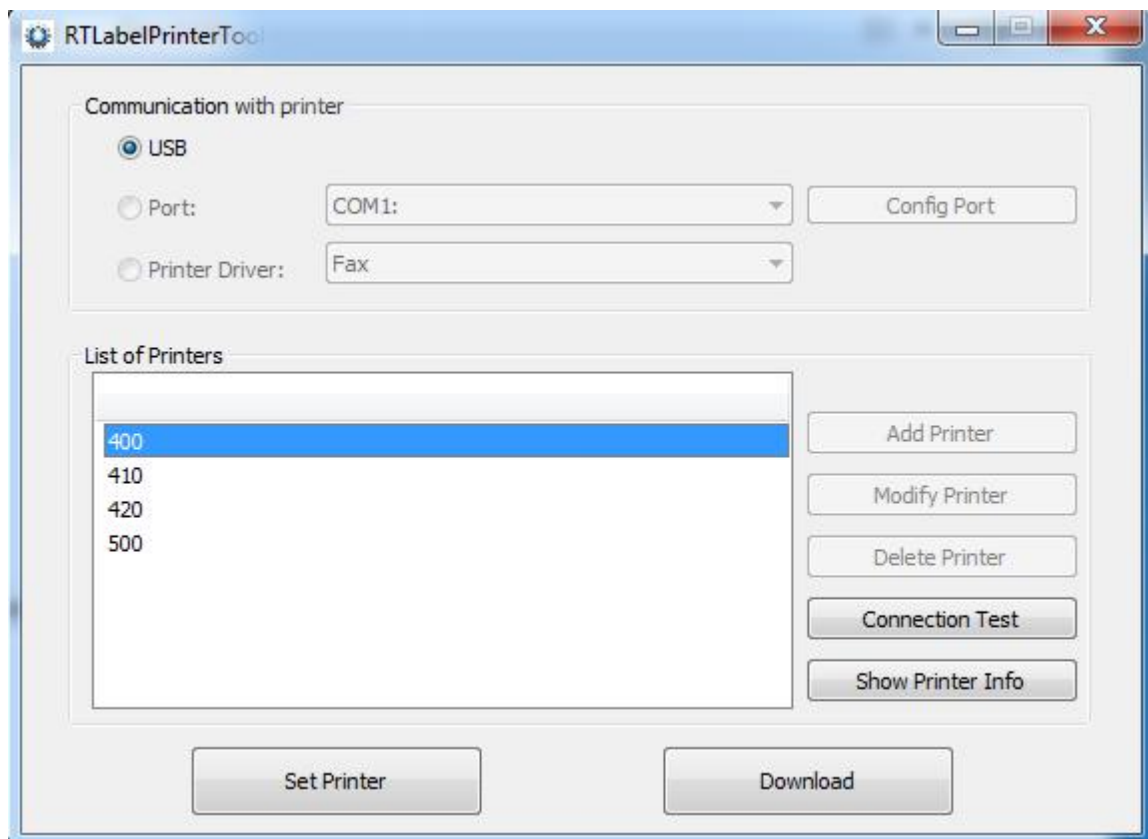
The printer needs to be ready before using the setting tool:

- a. Confirm that the printer is connected to the power supply and is turned off;
- b. Insert the communication cable into the corresponding communication interface of the printer;
- c. Confirm that a paper roll has been loaded;
- d. Turn on the printer;

2.1 Connection Test

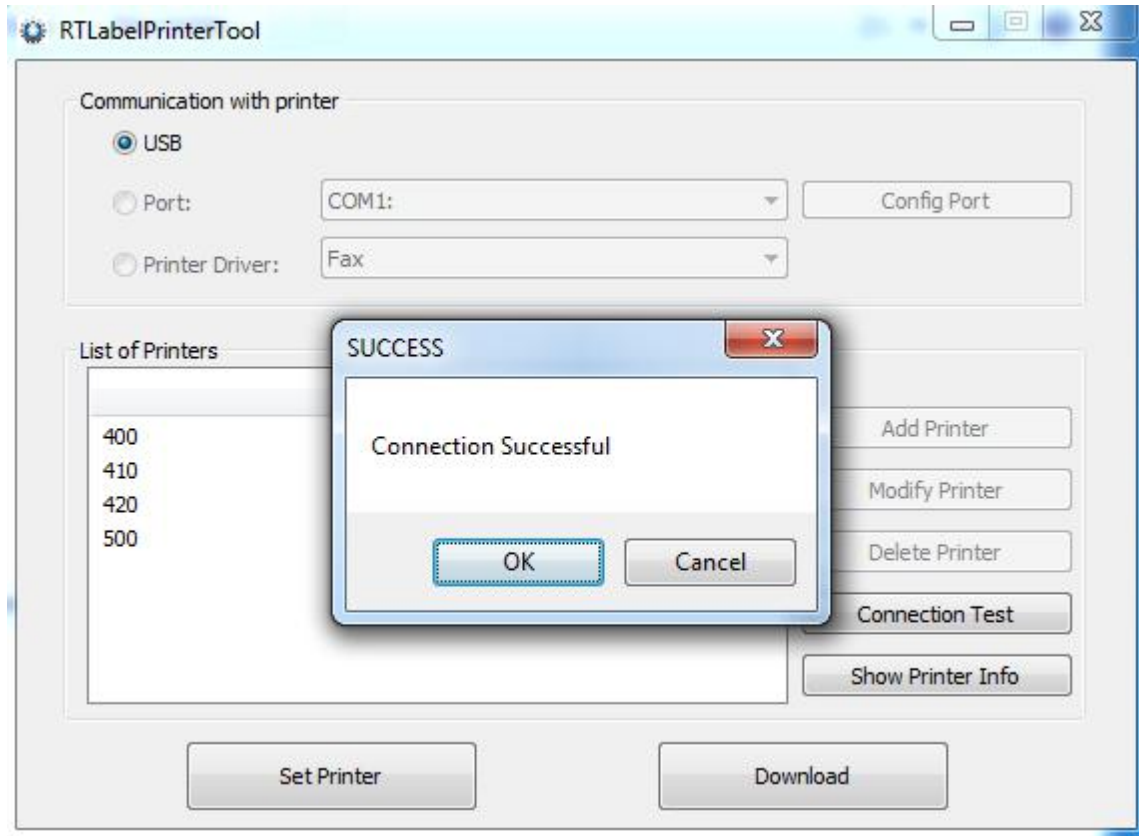


The operation display is as follows:

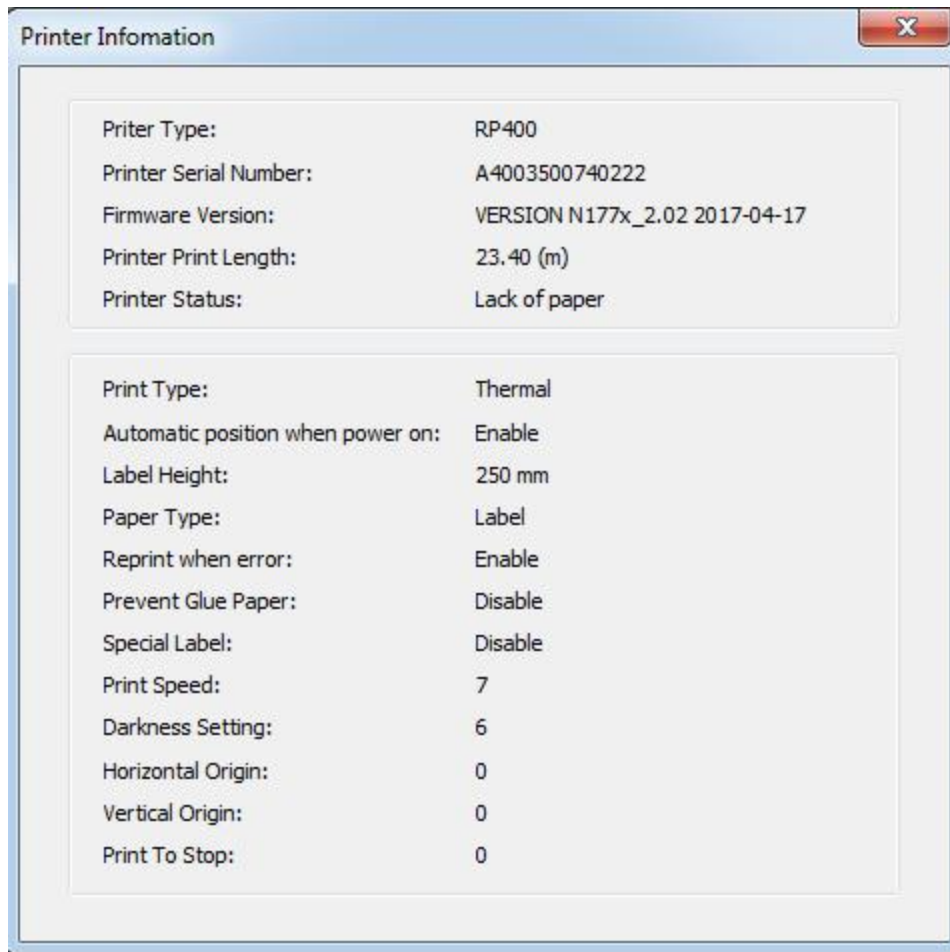


According to the model interface, select U or other port or driver port to connect the printer, and click [Connection Test]. If the following figure is displayed successfully, it means that the printer has been connected.

(if connection fails, please reinstall the communication cable and check the communication settings.)



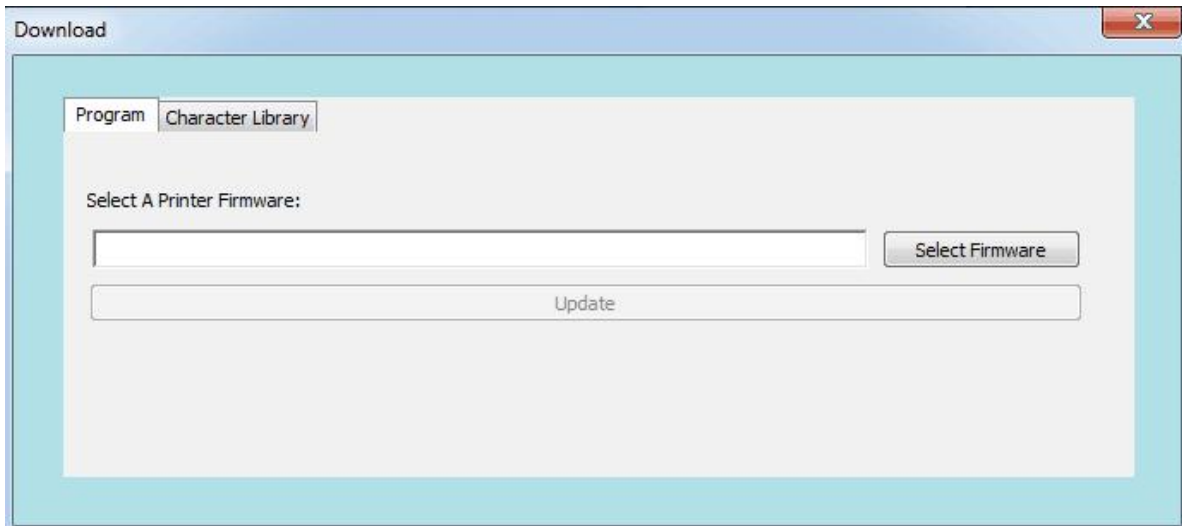
2.2 Display Printer Information



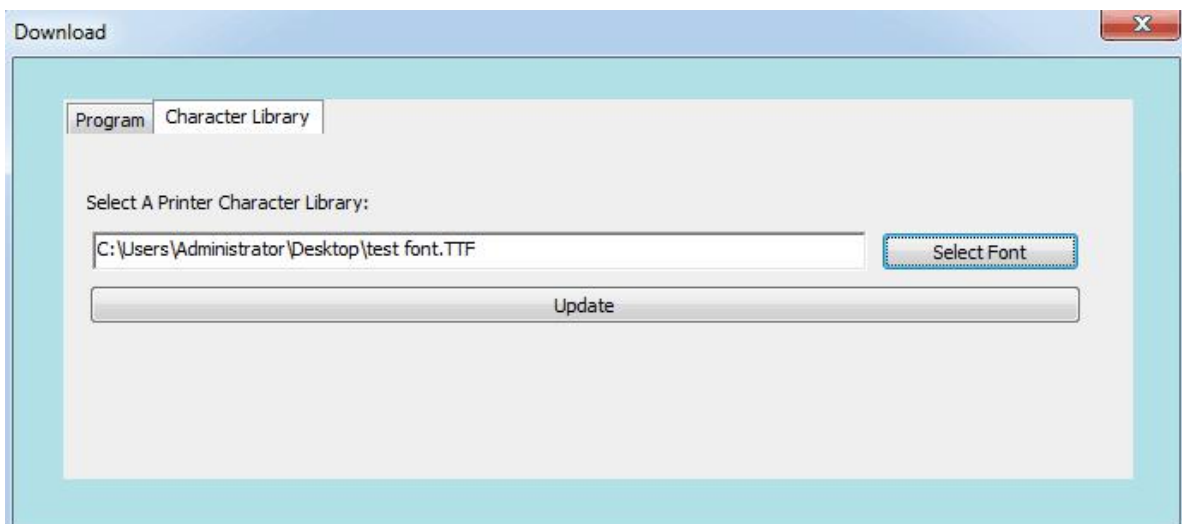
Click [Display Printer Information] to view the basic information of the current printer.

2.3 Download

When the firmware version of the printer is low or not ideal, click [Download]. The dialog box shown below is displayed. Click [Select Program File] to select the program, and then click [Update]. The printer light is off for about 3s, and a sheet of paper will be fed after the printer is automatically turned on. You can check the printer information to confirm whether the update is successful.

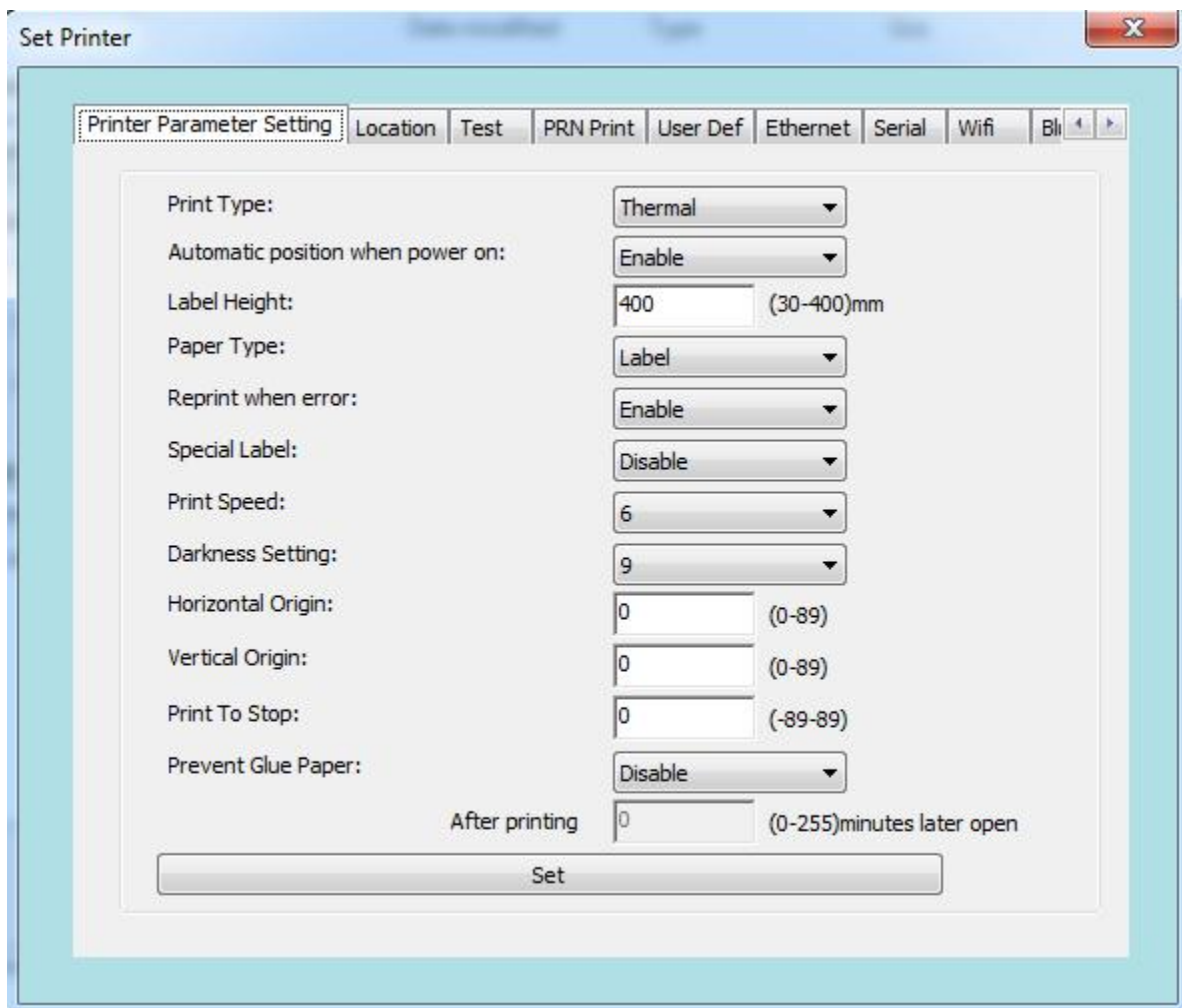


If you want to change the font, select [Font Library], click [Open File] to select the font, and then click [Update]; after the printer beeps once, the font is successfully updated.



2.4 Set Printer

2.4.1 print set

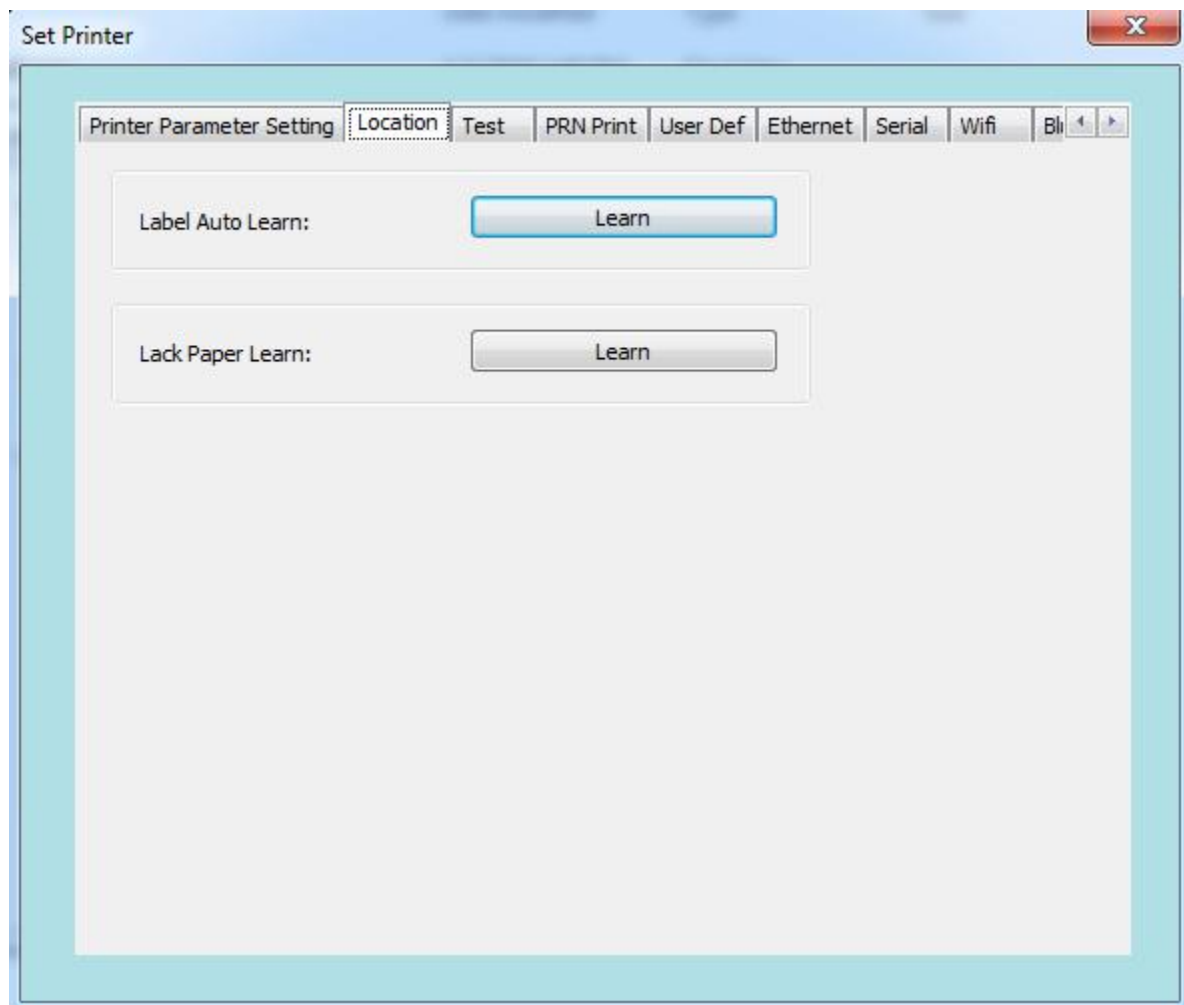


Click [Set Printer] to pop up the window shown in the figure below. You can change the basic parameters in the print setting interface.

The function details are as follows

Submenu	Description	Parameter description (parameter order is consistent with description)	Defaults
Print Type	Thermal ribbon	0~1	1
Automatic position when power on	Enable/disable	0~1	1
Label height	Max label height supported	30~400mm (Two bytes)	400
Paper type	Continuous paper, label paper, and black-marked paper	0~2	1
Reprint when Error	Enable/disable	0~1	1
Special label	Enable/disable	0~1	0
Print Speed	Speed setting	0~9	5
Darkness setting	Density setting	0~15	8
Horizontal Origin	Adjust the horizontal print start position	Adjust the horizontal start coordinate option: (+00 - +89) point	0
Vertical Origin	Adjust the vertical coordinate of print start position	Adjust the vertical start coordinate option: (+00 - +89) point	0
Print To stop	Locate the regular, paper tearing and cutter positions (take the paper tearing position as the zero point)	Set label stop position option: (-89 - +89) point	0
Prevent Glue Paper	If specified time is exceeded, feed paper back and forth before printing the first sheet	Start 0 - 255 minutes after stopping printing	0

2.4.2 label calibration :



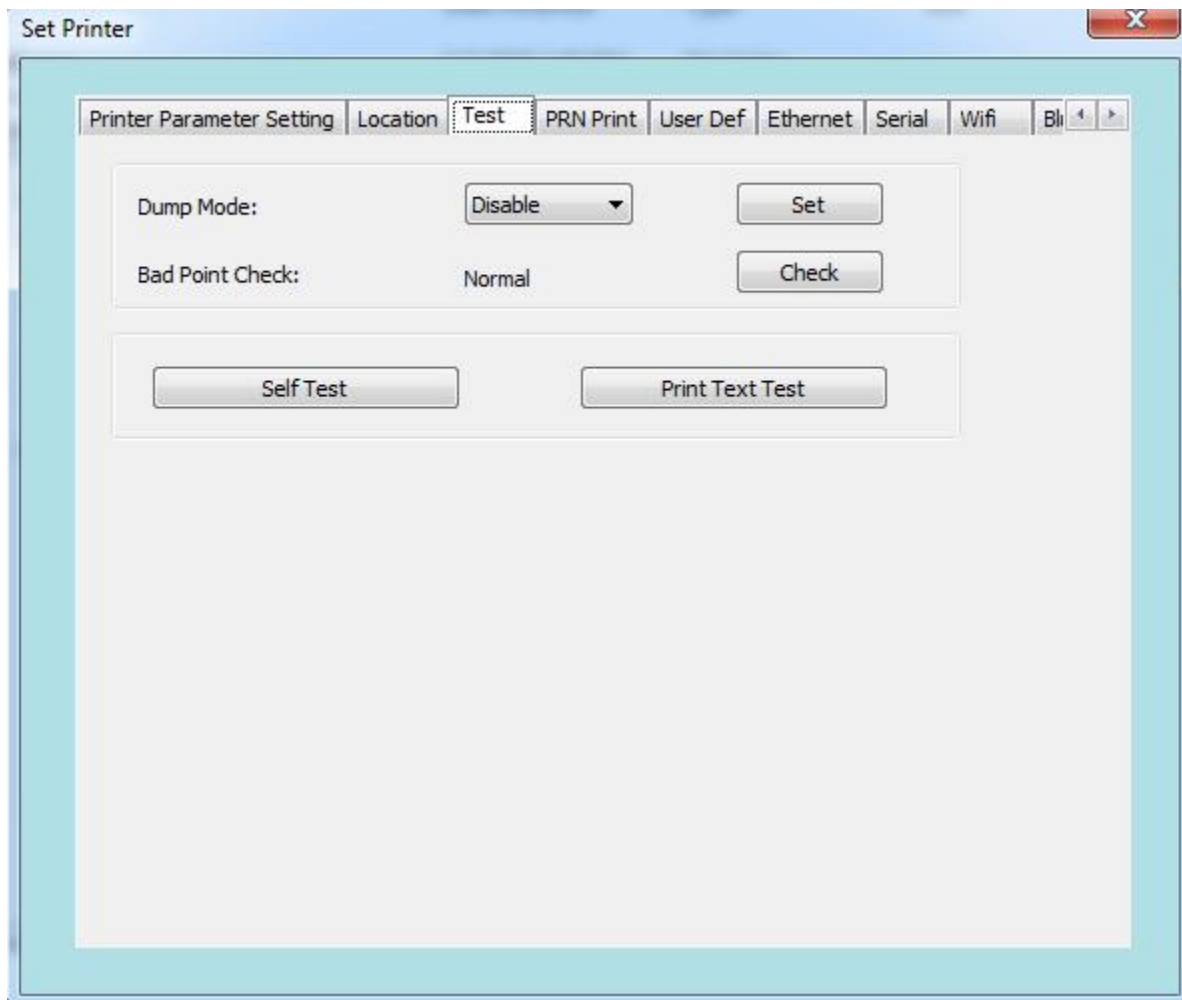
When the printer is ready, switch to the label calibration screen.

(As shown in the figure below) :

a. Automatic label learning: Recognize the specifications of the newly loaded paper through learning.

b. Paper shortage learning: If paper shortage prompt occurs when there is paper or the seam cannot be found while label learning, you can click [Paper Shortage Learning] when there is no paper and the cover is closed. Finally, reload the paper for automatic label learning.

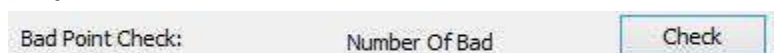
2.4.3 print test



Switch to print test screen. (As shown in the figure below)

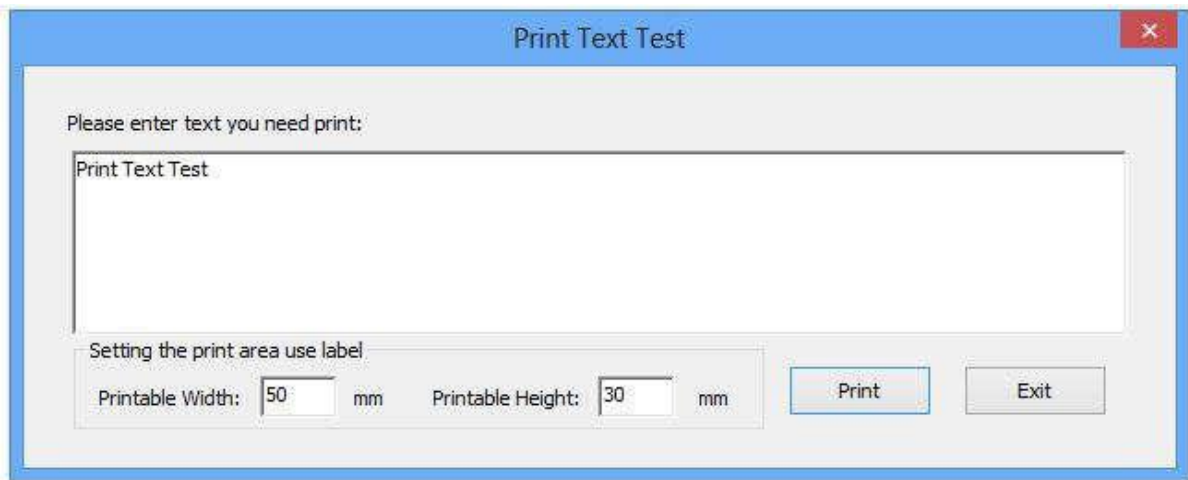
a. Debug mode : The mode is disabled by default. After enabling this mode, the printer prints the original data sent to facilitate finding errors;

b. Print head bad point detection : When the printer is ready, click [Detect] to check whether the print head is normal. If not, the number of bad points will be displayed.



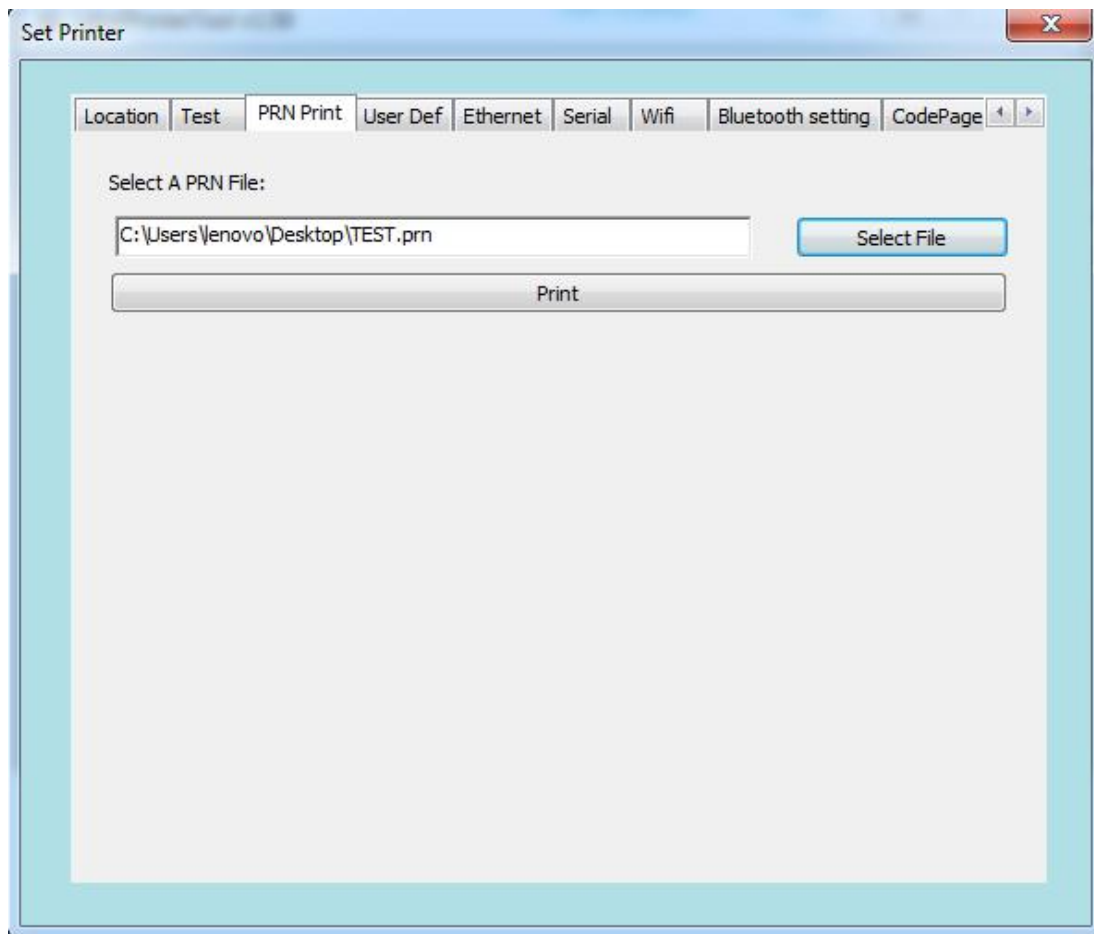
c. Print Self-Test Page : When you first install the printer or if there are any problems with the printer, you can click [Print Self-Test Page] to confirm the firmware version, printer parameter setting status, print quality and relevant setting information of peripheral devices, etc.

d. Print test text: As shown in the figure below, you can enter the text you want to print in the text box and set the printable area in label mode. Click [Print] to perform print test.



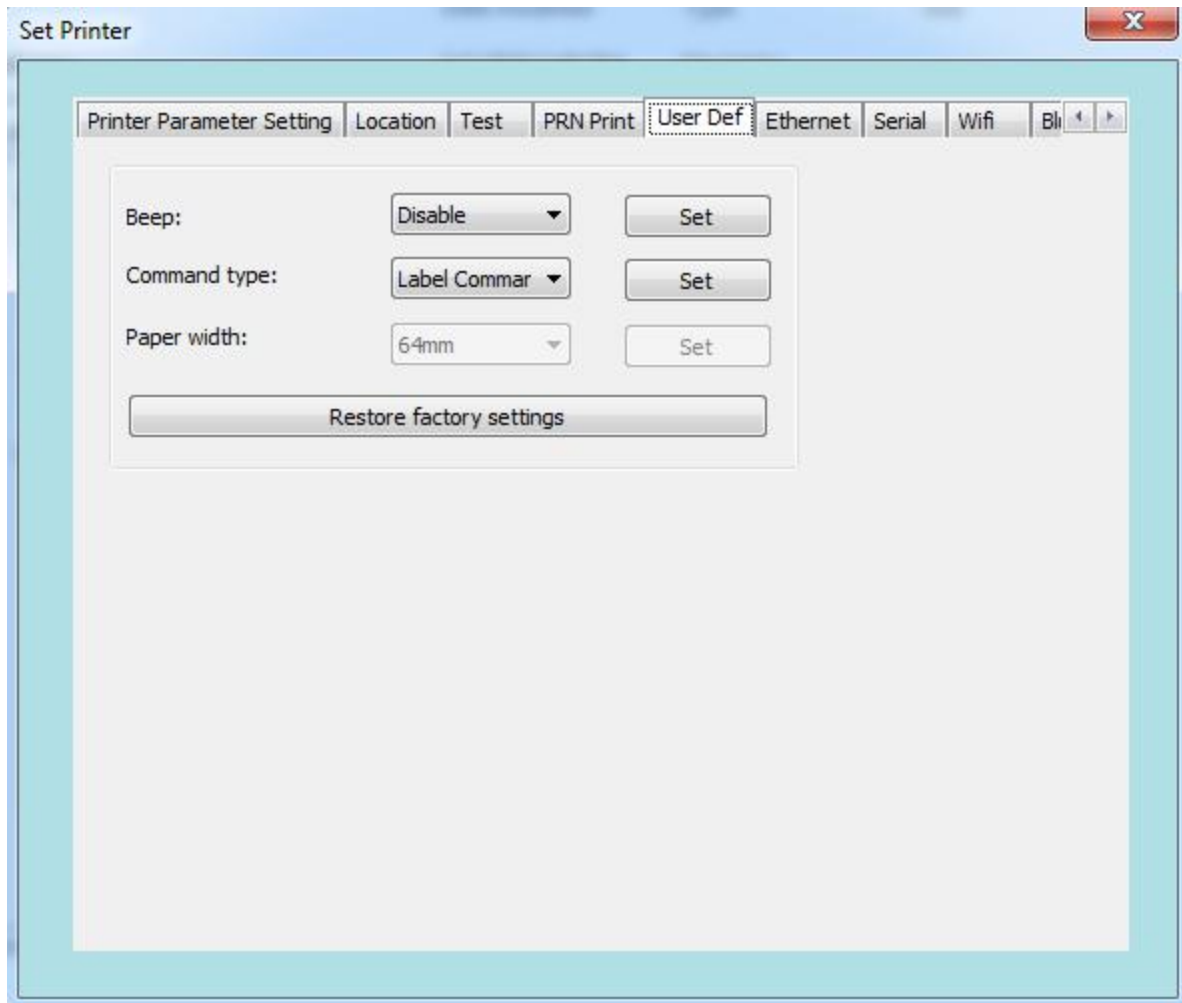
2.4.4 PRN Print

Click [Open File], select an RRN file and click [Print] to print the file.



2.4.5 User setting

Switch to the user setting screen to set buzzer on/off or restore the default settings of the printer.



The function details are as follows

Submenu	Description	Parameter description (parameter order is consistent with)	Default
Beep	Change the sound of	ON、 OFF , 0ON ,	0
Restore factory setting	Reset printer back to the factory default settings		None

2.4.6 Ethernet

Switch to Ethernet interface to set Ethernet parameters

1. Set the IP address of the printer, change it to "192.168.1.87", and set the communication port
2. Set the printer's subnet mask and change it to "255.255.255.0"
3. Set the printer's gateway as "192.168.1.1"
4. Set the printer's DHCP function. The printer's DHCP is disabled by default. If necessary, it can be enabled to make the printer automatically obtain the address
5. Set the Mac address and set the network transmission rate.

The screenshot shows a window titled "Set Printer" with several tabs: "Printer Parameter Setting", "Location", "Test", "PRN Print", "User Def", "Ethernet", "Serial", "Wifi", and "Bluetooth". The "Ethernet" tab is active. It contains two radio buttons: "IP" (selected) and "DHCP". Below the radio buttons are input fields for "IP:" (192 . 168 . 1 . 87), "Sub Mask:" (255 . 255 . 255 . 0), and "GateWay:" (192 . 168 . 1 . 1). To the right of the IP field is a "Port:" field (9100) and a "Set" button. Below the DHCP radio button is a dropdown menu set to "Disable" and a "Set" button. At the bottom, there is a "MAC:" field with six boxes containing "00" and a "Set" button.

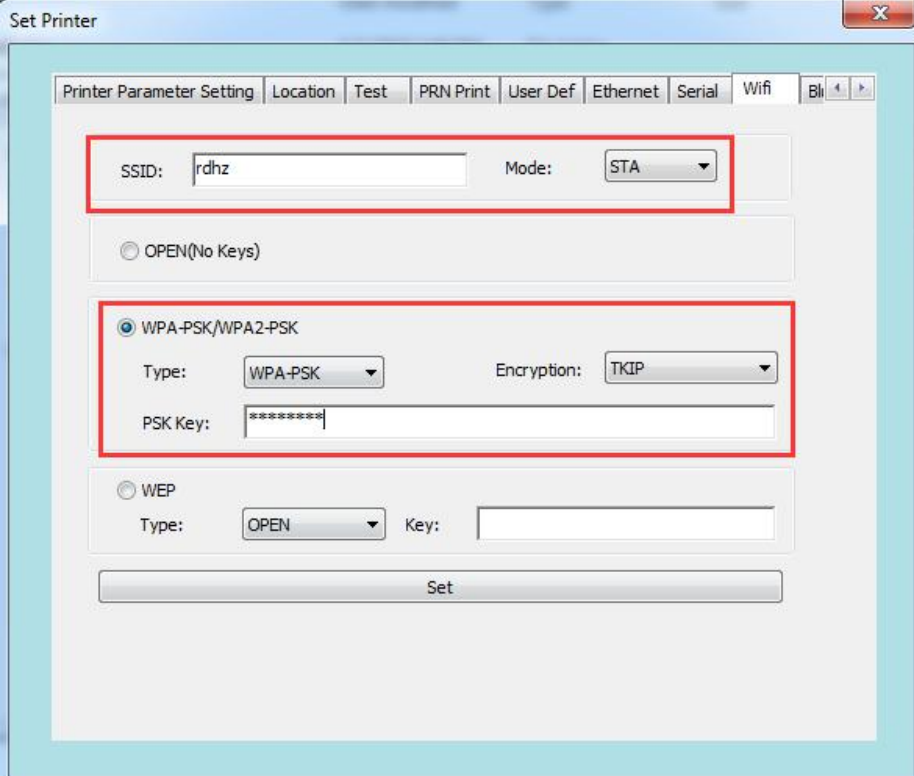
Note : Before setting the web address, if the printer is connected with one of following two methods: "One" uses the "Internet port", "Two" the IP address in the print driver mode. After changing the IP, the printer's IP address is changed. At this point, the printer is disconnected from the tool, and the IP address of the tool needs to be reset before connecting the printer. Other connection methods are not affected.

2.4.7 WIFI

Printer parameter setting instruction

1. Open the setting tool "PrinterTool".
2. According to the instruction manual of this setting tool, first make sure that the printer is connected.
3. Open the setting tool and select "WiFi".
4. Input the SSID (WiFi name) to which the printer is connected, and the corresponding mode.
5. Enter the WiFi encryption type and the WiFi password, as shown in the figure. For example, add WiFi rdhz, with the password encryption type of WPA-PSK, enter the WiFi password, and click "Set".
6. After clicking "Set", the printer will print the set WiFi parameters. Please print a self-test page and compare the printed WiFi parameters with those of the router. If matched, please wait patiently and the printer will connect to the WiFi within 1 minute. If not matched, please reset and repeat the above steps.

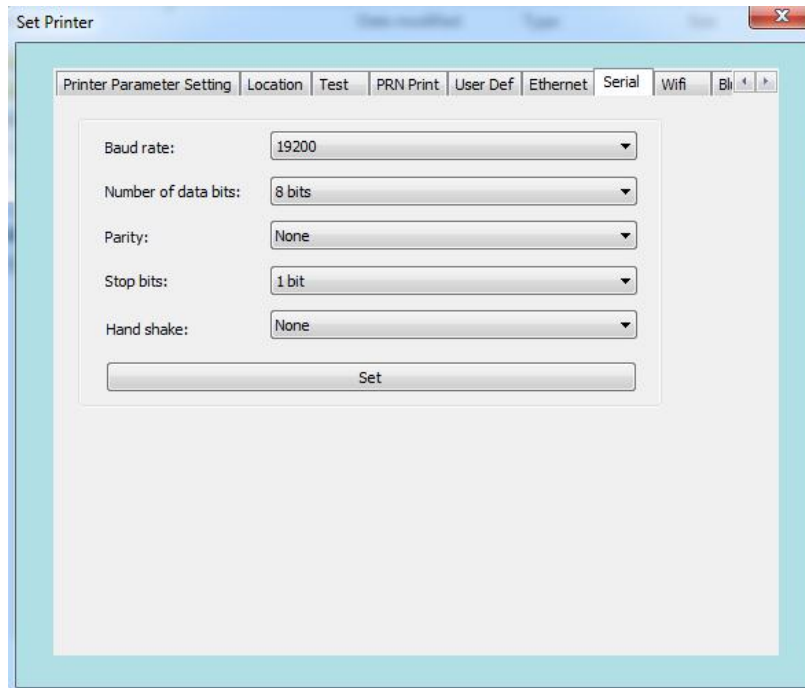
Note: The factory default IP address of the printer is 192.168.1.87. If the printer's IP address and the wireless router's IP address are not on the same network segment, you need to set the printer's IP address to ensure the two addresses are on the same network segment.



The screenshot shows the 'Set Printer' application window with the 'Wifi' tab selected. The interface includes several configuration fields and options:

- SSID:** A text input field containing 'rdhz'.
- Mode:** A dropdown menu set to 'STA'.
- Encryption Options:** Three radio buttons are present: 'OPEN(No Keys)', 'WPA-PSK/WPA2-PSK' (which is selected), and 'WEP'.
- WPA-PSK/WPA2-PSK Configuration:** This section includes a 'Type' dropdown set to 'WPA-PSK', an 'Encryption' dropdown set to 'TKIP', and a 'PSK Key' input field with masked characters (*****).
- WEP Configuration:** This section includes a 'Type' dropdown set to 'OPEN' and an empty 'Key' input field.
- Buttons:** A 'Set' button is located at the bottom of the configuration area.

2.4.8 Serial Port Settings



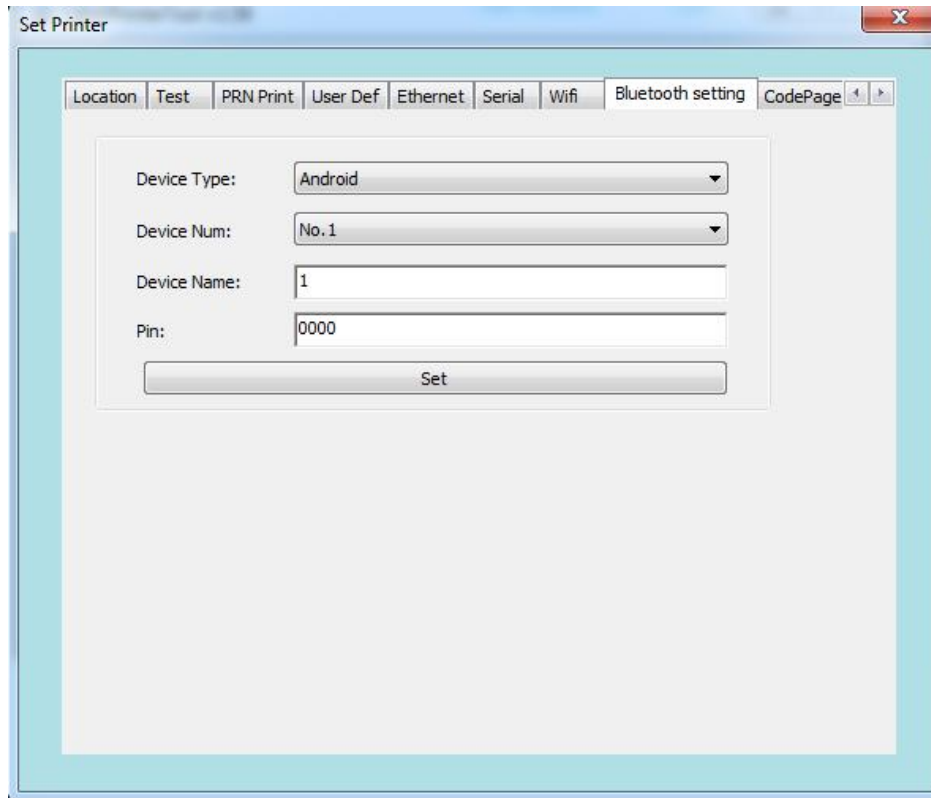
Switch to serial port setting interface to set serial port parameters. interface to set serial port parameters.

2.4.9 Bluetooth Settings

If the printer has Bluetooth function, you can set the Bluetooth parameters.

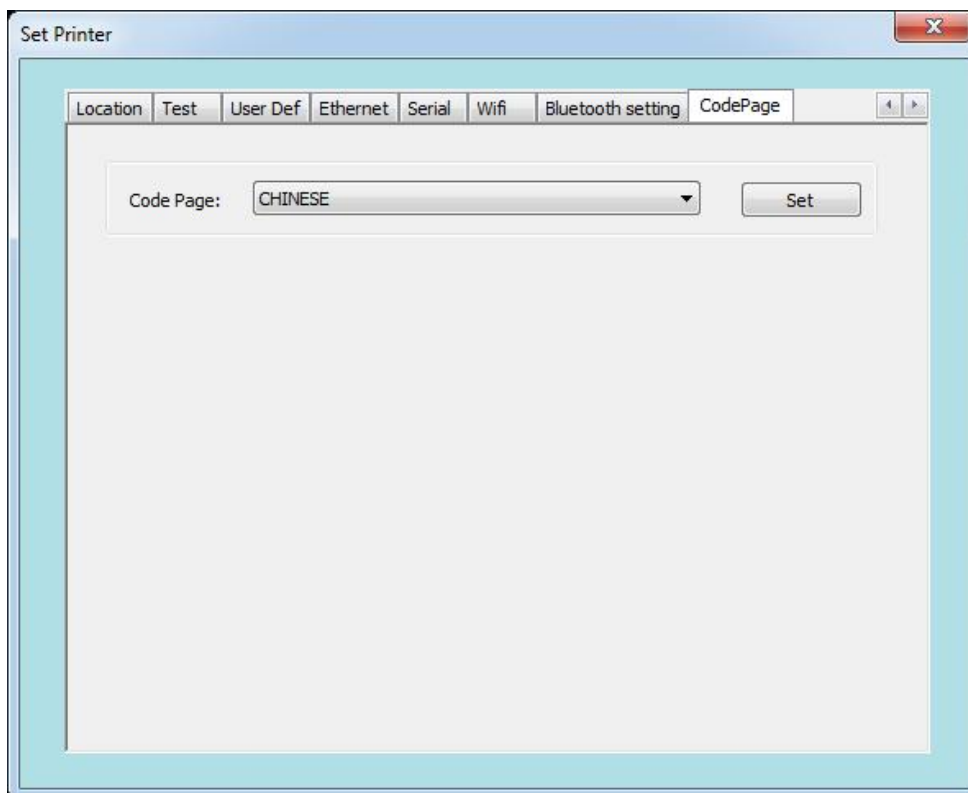
1. First press and hold the FEED button of the printer, and then turn on the printer to print the self-test page. From the self-test page, find out the Bluetooth pairing name and password of the printer.
2. The Bluetooth pairing name and password can be changed if necessary. At this time, the "Bluetooth Settings" function in the integrated setting tool needs to be used, as shown in the figure below.
3. Enter the new "Device Name" and "Pin" for the printer Bluetooth, and click "Set". After the printer is restarted, the settings are changed successfully.
4. Power on the main device and search for the external Bluetooth device.
5. Find the Bluetooth printer just changed and enter the corresponding password to complete the pairing. When pairing, the printer must be on.


Note: During pairing, please do not turn on multiple printers at the same time; otherwise, you may not be able to judge which printer was successfully paired.



2.4.10 Character Set Setting

Switch to the character set setting screen, click the drop-down button to select the required codepage, and click "Set".





Warning: The contents of this Manual shall not be changed at will without consent. Rongta Technology (Xiamen) Group Co., Ltd reserves the right to change the product in terms of technologies, parts, software and hardware. Please contact the dealer for further information of the product. No part of this Manual shall be reproduced or spread in any form or by any means without permission.